

Testpassport**Q&A**



H i g h e r Q u a l i t y

B e t t e r S e r v i c e !

We offer free update service for one year
[Http://www.testpassport.com](http://www.testpassport.com)

Exam : **MD0-205**

Title : Mcdata Certified Storage
network designer exam

Version : Demo

1. Which application allows you to export a McDATA SAN Router configuration?

- A. EFCM Basic
- B. SANtegrity
- C. SANavigator
- D. EFCM
- E. SANvergence Manager

Answer: E

2. Which method is best used to specify which servers can access specific LUNs?

- A. HBA driver configuration
- B. LUN masking in the switch
- C. LUN mapping in the server
- D. persistent binding in the server
- E. LUN masking in the storage array

Answer: E

3. Which of the following is required to achieve 99.999% availability?

- A. Dual rack installation
- B. Separate power circuits
- C. Router connectivity to DR site
- D. Dual partitioned Intrepid 10000

Answer: B

4. A customer has significant power considerations. They want to purchase a switch from McDATA that uses the least power while still maintaining power supply redundancy. Which switch is the best choice for them?

- A. Intrepid 10000
- B. Intrepid 6140
- C. Sphereon 3232

D. Sphereon 4300

E. Sphereon 4500

Answer: E

5. Which two technologies provide Fibre Channel over IP services? (Choose two.)

A. SES

B. iFCP

C. FCIP

D. iSCSI

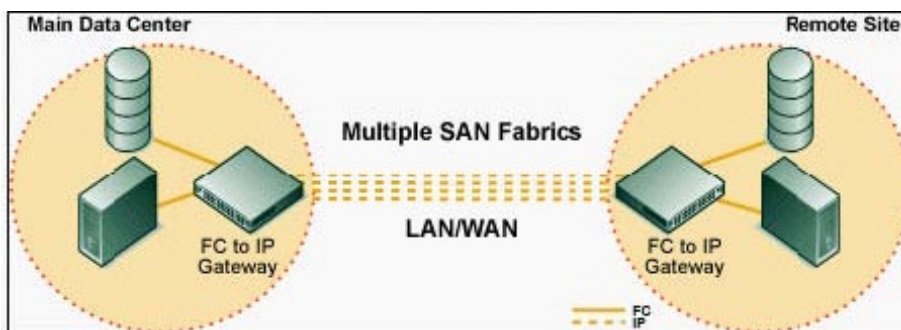
E. FICON

F. FC-SB2

Answer: BC

6. Click the Exhibit button.

Which technology is illustrated in the exhibit?



A. VPN

B. iFCP

C. FCIP

D. iSCSI

Answer: B

7. On the McDATA Intrepid 10000, the upper two or the lower two optical paddles in a Line Module (LIM) cannot both be _____ in a supported configuration.

A. 2 Gbps

B. 4 Gbps

C. 8 Gbps

D. 10 Gbps

Answer: D

8. A customer would like to backup an application via the SAN Infrastructure. When the server offloads the backup job to a backup server which performs the backup to SAN attached tape drives, this is a common example of _____?

A. Server-less backup

B. Hybrid LAN backup

C. Virtual tape backup

D. Tape stripping

Answer: A

9. Which three features must a switch or director have to support FICON cascading? (Choose three.)

A. port binding

B. fabric binding

C. switch binding

D. Open Trunking

E. persistent binding

F. Insistent Domain IDs

Answer: BCF

10. A customer has a requirement that tape backup not interfere with application throughput. Which two options can accomplish this? (Choose two.)

A. Install an HBA for tape traffic

B. Create a separate tape SAN

C. Utilize a LAN-free backup solution

D. Increase ISL connectivity between switches

Answer: AB

11. Given an environment with a mixture of 1 Gbps and 2 Gbps HBAs connecting to a 2 Gbps switch to a 2 Gbps storage array; which of the following statements is true?

- A. 1 Gbps and 2 Gbps devices cannot be mixed on a 2 Gbps switch
- B. 2 Gbps devices will negotiate down to 1 Gbps
- C. 1 Gbps devices will negotiate up to 2 Gbps
- D. Devices will communicate at both 1 and 2 Gbps

Answer: D

12. Which two characteristics of a customer's infrastructure are relevant to a Storage Area Network design? (Choose two.)

- A. Type of SCSI connectors
- B. Number of existing storage ports
- C. Number of applications per server
- D. Type of fiber optic cabling installed
- E. Distance between client workstation and server

Answer: BD

13. For security purposes, what is used to prevent Fibre Channel frames from being stored after a switch is powered off or has failed?

- A. FMS
- B. OSMS
- C. Full Volatility
- D. Open Trunking

Answer: C

14. When adding a switch to an existing SAN, which two statements are true? (Choose two.)

- A. Domain IDs must be unique.
- B. Port counts should be the same on all switches.
- C. RA_TOV should be consistent across the switches.

D. IP addresses and masks for management must be defined.

E. Zoning of the new switch must be done prior to E_port connections.

Answer: AC

15. Which three configuration changes require the McDATA Eclipse 1620 to be reset? (Choose three.)

A. SNMP traps

B. zoning changes

C. firmware upgrade

D. SNS configuration

E. management parameters

Answer: CDE

16. You are planning a Disaster Recovery (DR) solution over iFCP using Eclipse SAN Routers. What should be equal in both connected fabrics?

A. Zone ID

B. Fabric ID

C. Domain ID

D. IP address

E. storage array port number

Answer: A

17. What is the McDATA supported limit of the number of switches in a single fabric?

A. 12

B. 16

C. 24

D. 31

E. 239

Answer: C

18. Which configuration offers a customer the highest availability (99.999%)?

- A. dual switch, dual fabric connectivity
- B. dual switch, single fabric connectivity
- C. dual director, dual fabric connectivity
- D. single director, single fabric connectivity
- E. single partitioned director, dual fabric connectivity

Answer: C

19. A customer has 1u of rack space available and has a requirement for 99.99% availability. What products would you recommend if they plan on implementing a SAN?

- A. Single Intrepid 6140 Director
- B. Two Sphereon 4700 Switches
- C. Two Sphereon 4400 Switches
- D. Two Eclipse 2640 SAN Routers

Answer: C

20. Which function would you recommend to automatically block E_Ports when error thresholds are reached?

- A. ISL Binding
- B. Port Fencing
- C. Open Trunking
- D. Threshold Alerts

Answer: B