

Testpassport**Q&A**



H i g h e r Q u a l i t y

B e t t e r S e r v i c e !

We offer free update service for one year
[Http://www.testpassport.com](http://www.testpassport.com)

Exam : **E20-855**

Title : Networked Storage-SAN
Expert for Implementation
Engineers

Version : DEMO

1. Your customer has three fabric islands. One fabric island has three ED-1032s. Two other fabric islands have two DS16B2s in each. The customer wants to migrate to two fabrics built of two MDS 9509s in each fabric. Several SUN Solaris servers must be migrated on-line to the new fabrics. What are two [2] steps required to perform this migration?

- A. Disable one path to the fabric
 - B. Apply the zoning to the new switch
 - C. Reactivate the disabled path on the new fabric with PowerPath commands and set the speed to 1GB
 - D. Reactivate the disabled path on the new fabric with PowerPath commands and set the speed to 2GB
- Your customer has three fabric islands. One fabric island has three ED-1032s. Two other fabric islands have two DS16B2s in each. The customer wants to migrate to two fabrics built of two MDS 9509s in each fabric. Several SUN Solaris servers must be migrated on-line to the new fabrics.

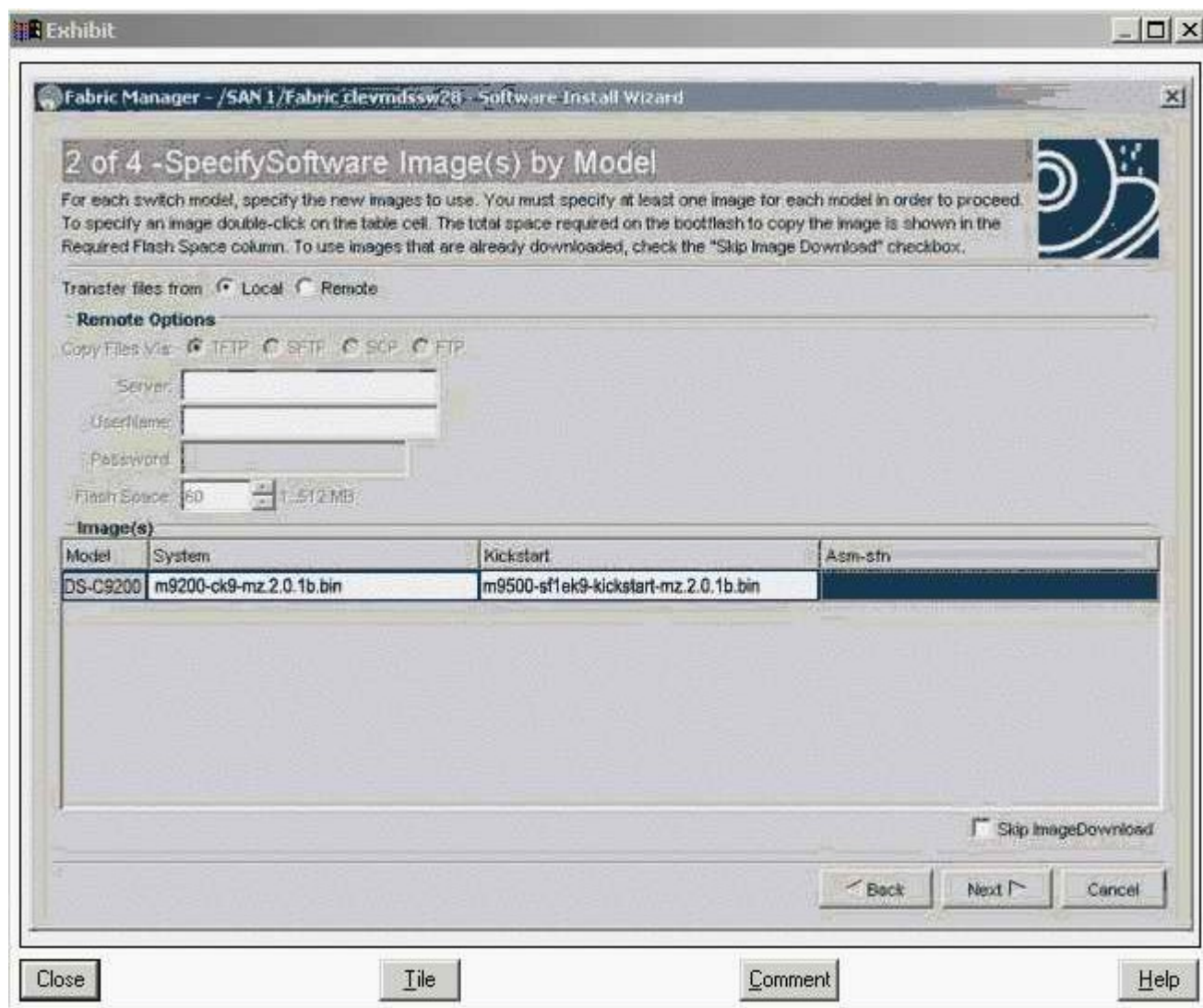
Answer: AC

2. Customer has implemented HP-UX Campus Cluster using dual-lock disks. They have experienced "split brain" syndrome in the past. What is a permanent fix for this problem?

- A. Unlock cluster lock disks
- B. Implement a single lock disk
- C. Add one more node to both sides of the cluster
- D. Implement multiple network and heartbeat configurations for each node in the cluster

Answer: D

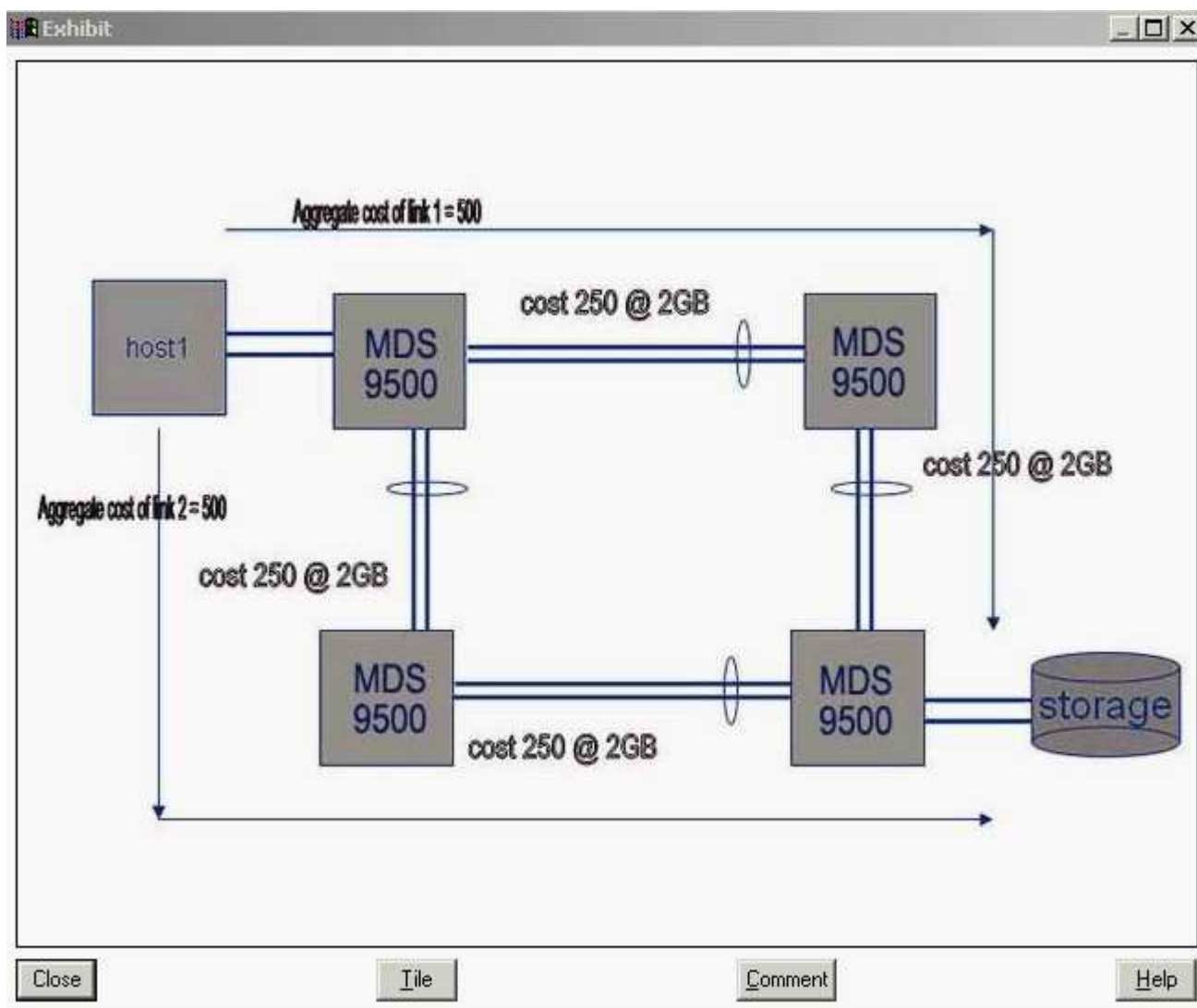
3. Click the Exhibit button. The customer has multiple MDS 9500 and MDS 9200 directors and switches. They need to have the firmware of the MDS 9216 upgraded. The Fabric Manager's Software Install Wizard shown in the exhibit shows a problem that must be addressed before continuing the upgrade. What is likely to be the problem?



- A. The file copy mode is wrong
- B. The system file is wrong type
- C. The Kickstart file is wrong type
- D. Fabric Manager is the wrong version

Answer: C

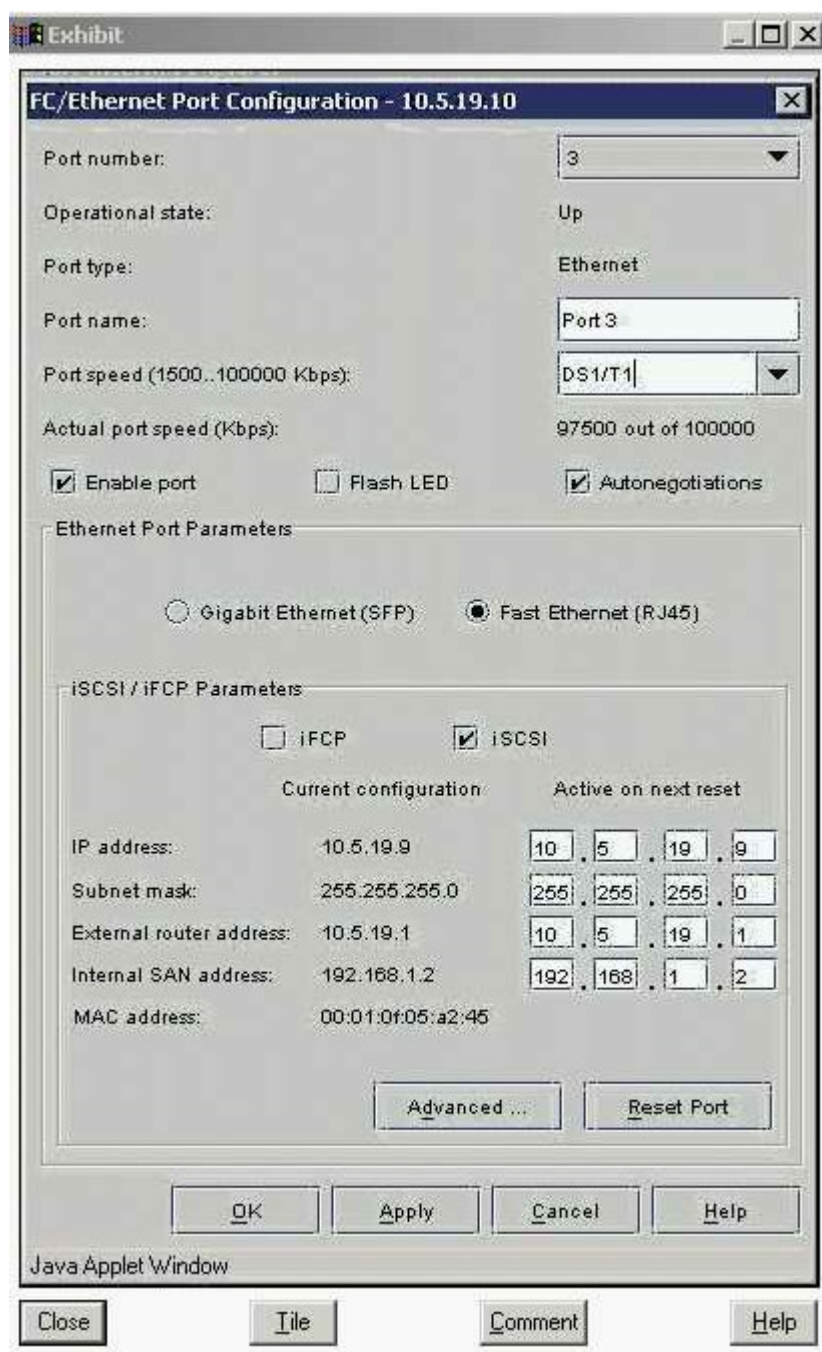
4. Click the Exhibit button. What is the calculated cost from host to storage, in the diagram, if a link fails in a port channel group?



- A. 250
- B. 375
- C. 500
- D. 1500

Answer: C

5. Click the Exhibit button. The customer added a new iSCSI server to the MP-1620M. They can not access the storage array on IP address 10.5.19.9. The customer's network is setup for Fast Ethernet. Please see exhibit. What is the issue?



- A. Port Speed setting is wrong
- B. Port Parameter setting is wrong
- C. Autonegotiations setting is wrong
- D. iSCSI/iFCP parameter setting is wrong

Answer: A

6. Your customer is implementing a META SAN in a B-series AP-7420B environment. They want to connect a host from fabric A with storage in fabric B. The host is connected to port 14 on the switch with Domain ID 2. The storage port is on port 7 on a switch with Domain ID 4. The customer created in both of the fabrics the zones with the following command: zonecreate "Isan_hostA_storageB", "2, 14" and

zoneadd "lsan_hostA_storageB", "4, 7". After enabling the config the customer cannot see the storage.

What went wrong?

- A. InterVSAN Routing was not enabled
- B. Used the wrong ports for the zoning
- C. VSAN parameters are not configured correctly
- D. Port and Domain IDs are not valid for LSA zoning

Answer: D

7. Which MP-2640M feature enhances the security of the environment when you are locking down?the domain IDs of E-ports or R-ports?

- A. Set FCID
- B. Lock FCID
- C. Insistent Domain ID
- D. Persistent Domain ID

Answer: C

8. Your customer has recently purchased a second site and is now in the process of connecting the second site to the existing environment. Customer is using DS16B2, DS32B2 and ED-24000B switches and directors. Sever problems, such as unstable and unmanageable fabric, occurred after connecting the two sites with an MPR 7420. How could this have been prevented?

- A. Set all member switches WAN_BB to 256
- B. Set all member switches PID format set to 0
- C. Set fabric parameters WAN_TOV and ED_TOV
- D. Set Management Server on the multi-protocol router to disable

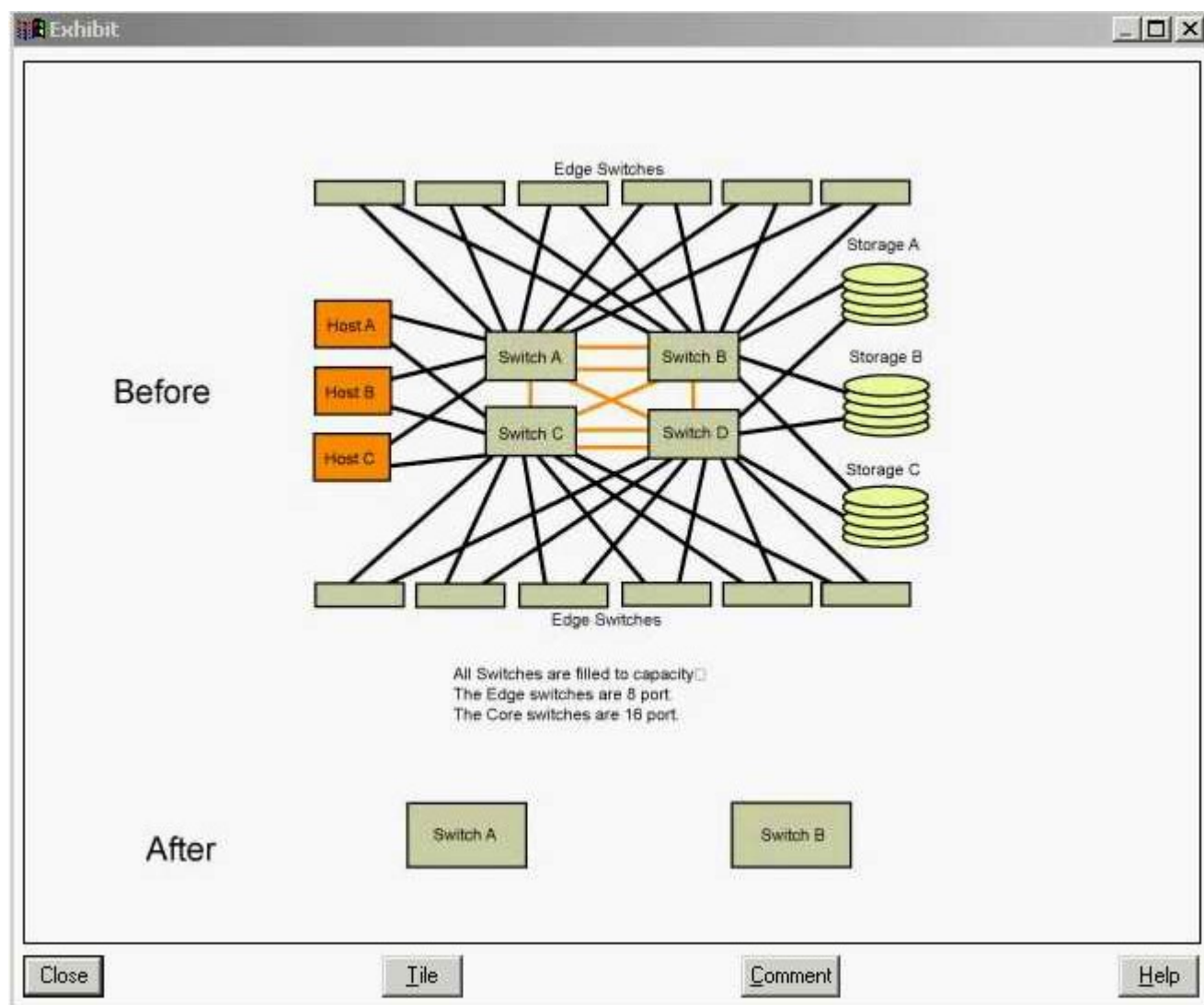
Answer: D

9. Your customer is booting their dual-attached HP-UX servers from the DMX via an M-series SAN. They are using PowerPath 4.x. Over the weekend they added a new switch and changed some storage cabling. Now they cannot boot up the servers. What is the reason for this?

- A. Customer did not export the zoning information
- B. Customer did not update the masking information in the VCMDB
- C. Customer did not remove the failed links with powermt check
- D. Customer did not delete the hardware path links to the storage prior to the changes

Answer: D

10. Click the Exhibit button. The customer wants to collapse the environment shown in the exhibit into two switches. They do not require any growth. What is the smallest switch they can use to accomplish this requirement?



- A. 32 port
- B. 64 port
- C. 140 port
- D. 256 port

Answer: B

11. Your customer has two SAN islands built with two ED64Ms in each fabric. Due to the end of the lease these are being replaced with ED-12000Bs. What are the steps to migrate the fabrics without recreating the zones?

- A. Export the zones, edit them with a text editor and import them
- B. Open Connectrix Manager, go to the fabric in question and click on "Import Fabric Topology"
- C. Open Connectrix Manager, go to the fabric in question and click on "Export Fabric Topology"
- D. Obtain IP address, user login and password for both switches and use Zone_convert.exe to migrate

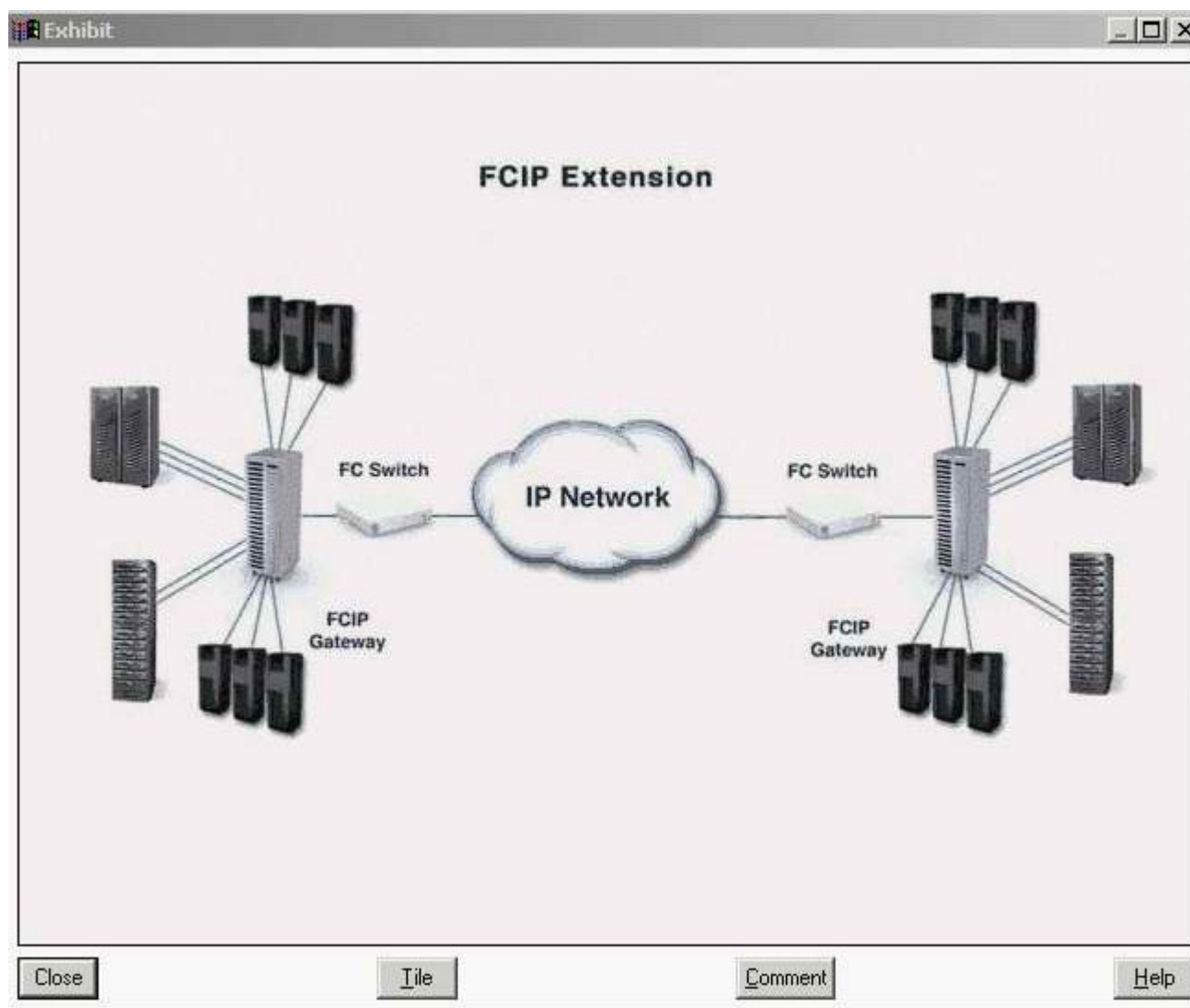
Answer: D

12. A Customer is unable to monitor a Connectrix MDS switch from ControlCenter. What must be done for the customer to monitor the switch?

- A. Discover the switch in ControlCenter
- B. Install On-Alert on ControlCenter server
- C. Enable SNMP V1 on the Connectrix MDS
- D. Install the Cisco MIBs on the Connectrix MDS

Answer: C

13. Click the Exhibit button. What would the fabric display in the diagram look like using Connectrix Manager?



- A. You would only see the local fabric
- B. You would not see anything in the display
- C. You would see two fabrics displayed independent of each other
- D. You would see a single fabric containing all local and remote switches

Answer: D

14. Which iSCSI discovery method requires the target's IP address, TCP port, and iSCSI target name?

- A. Static
- B. BootP
- C. Discovery
- D. Zero-configuration

Answer: A

15. The customer has 500 identical servers that need to be allocated the same amount of storage space and storage protection. This task is estimated to take 100 man hours. Which ControlCenter Storage Provisioning Services steps will reduce the time it takes to provision storage to 10 man hours?

- A. Create storage pool, drag storage to the storage pool, highlight the host and allocate storage to the hosts
- B. Create storage policy, drag storage to the storage pool, highlight the host and allocate storage to the hosts
- C. Create host and storage pools, drag storage to the storage pool, highlight host pool and allocate storage to the hosts
- D. Create host and storage pools, drag host pool to the storage policy, highlight host pool and allocate storage to the hosts

Answer: A

16. Your customer recently added a Celerra to their environment and implemented iSCSI on Windows 2003 servers. They created the IQN name for the Windows servers via a script and the name looked as follows: iqn.2003-04.com.emc.HostA.0083 The servers cannot see the iSCSI LUNs. What is the reason for this?

- A. The network portal is not reachable
- B. Celerra converts upper case into lower case and Windows does not
- C. Customer download and installed the latest iSCSI driver from Microsoft's website
- D. Customer download and installed the latest iSCSI driver from the HBA vendor's website

Answer: B

17. Which security IP protocol would you implement if you required host-switch authentication?

- A. IVR
- B. ISAKMP
- C. DHCHAP
- D. SANTIegrity

Answer: C

18. Customer added three new servers to an existing SAN consisting of two fabrics. Each fabric consists of two switches with two ISLs. This change negatively impacted performance. Throughput is as follows: 20MB/s on Host HBAs at 4K block size 50MB/s on Symmetrix on the FA ports 60MB/s on each ISL port The physical disks are 80% utilized but with 100% cache-hit ratio. What should the customer do to improve performance?

- A. Add 16k to the block size
- B. Add two ISLs to the fabric
- C. Add more disks to the storage
- D. Add two FA ports to the storage

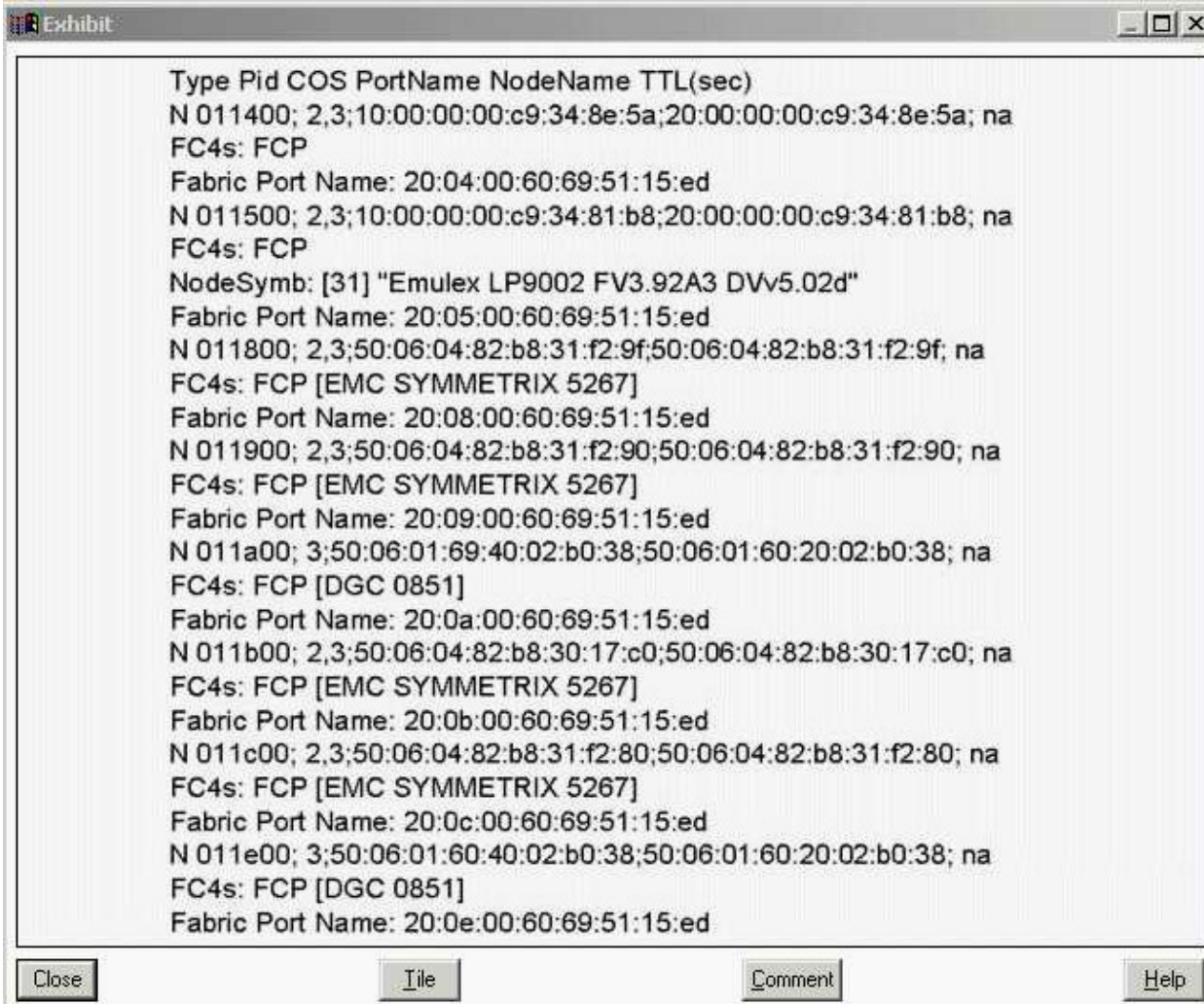
Answer: B

19. Customer requires dynamic SAN routing and load balancing across multiple links. Which Connectrix B-series routing policies should be used?

- A. Link-based
- B. Port-based
- C. Load-based
- D. Device-based

Answer: D

20. Click the Exhibit button. A customer sends you the nsshows output (see diagram) from a DS-16B2 switch. What PID format is the switch using?



```
Type Pid COS PortName NodeName TTL(sec)
N 011400; 2,3;10:00:00:00:c9:34:8e:5a;20:00:00:00:c9:34:8e:5a; na
FC4s: FCP
Fabric Port Name: 20:04:00:60:69:51:15:ed
N 011500; 2,3;10:00:00:00:c9:34:81:b8;20:00:00:00:c9:34:81:b8; na
FC4s: FCP
NodeSymb: [31] "Emulex LP9002 FV3.92A3 DVv5.02d"
Fabric Port Name: 20:05:00:60:69:51:15:ed
N 011800; 2,3;50:06:04:82:b8:31:f2:9f;50:06:04:82:b8:31:f2:9f; na
FC4s: FCP [EMC SYMMETRIX 5267]
Fabric Port Name: 20:08:00:60:69:51:15:ed
N 011900; 2,3;50:06:04:82:b8:31:f2:90;50:06:04:82:b8:31:f2:90; na
FC4s: FCP [EMC SYMMETRIX 5267]
Fabric Port Name: 20:09:00:60:69:51:15:ed
N 011a00; 3;50:06:01:69:40:02:b0:38;50:06:01:60:20:02:b0:38; na
FC4s: FCP [DGC 0851]
Fabric Port Name: 20:0a:00:60:69:51:15:ed
N 011b00; 2,3;50:06:04:82:b8:30:17:c0;50:06:04:82:b8:30:17:c0; na
FC4s: FCP [EMC SYMMETRIX 5267]
Fabric Port Name: 20:0b:00:60:69:51:15:ed
N 011c00; 2,3;50:06:04:82:b8:31:f2:80;50:06:04:82:b8:31:f2:80; na
FC4s: FCP [EMC SYMMETRIX 5267]
Fabric Port Name: 20:0c:00:60:69:51:15:ed
N 011e00; 3;50:06:01:60:40:02:b0:38;50:06:01:60:20:02:b0:38; na
FC4s: FCP [DGC 0851]
Fabric Port Name: 20:0e:00:60:69:51:15:ed
```

- A. Core PID
- B. Native PID
- C. Extended PID
- D. Not enough information

Answer: A