

# **T**estpassport**Q&A**



---

**H i g h e r   Q u a l i t y**

**B e t t e r   S e r v i c e !**

We offer free update service for one year  
[Http://www.testpassport.com](http://www.testpassport.com)

**Exam** : **C4040-121**

**Title** : Virtualization Technical  
Support for IBM i -v1

**Version** : DEMO

1.A customer needs two client IBM i partitions on a 4-core Power 720, with storage hosted by VIO Server. What is the least expensive method to manage this environment?

- A.HMC
- B.Virtual Partition Manager
- C.Integrated Virtualization Manager
- D.Systems Director Navigator for PowerVM

**Answer: C**

2.A customer has multiple POWERS 570 servers.The servers are controlled by multiple HMCs.The customer is installing an additional Power 770 server in this environment but will retain their existing HMCs.No updates to FSP or HMC levels have been made since installation of the POWERS servers. After reviewing the cover letters for ESP and HMC firmware levels, what updates are required to support the addition of the new server into the network.?

- A.Update only the HMCs to the latest version.
- B.Update only the FSPs to the latest release available.
- C.Update the FSP5 and HMC5 of the existing systems to the minimum level required.
- D.Update the POWERS ESPs to the most recent version available for the installed firmware release.Update the HMCs to the most recent release available.

**Answer: C**

3.An administrator wants to share a fibre attached TS3100 tape library between multiple IBM i 7.1 partitions.The system contains a PC #5774 - 4Gb fibre adapter and uses an IBM fibre switch.All IBM i partitions are hosted by VIO Server (VIOS).

How could the administrator configure the sharing of the tape library?

- A.Configure NPIV within VIOS, then configure each partition to use NPIV to share the tape library.
- B.Create a script that can be called after each backup job in a partition finishes, which will move the fibre adapter to the next partition
- C.In the HMC, select the host Power System, then select Operations - Schedule Operations New.Create a new Scheduled Dynamic Reconfiguration operation to move the fibre adapter between partitions.
- D.In the HMC, select the VIOS partition, then select Operations - Schedule Operations - Options - New.Create a new Scheduled Dynamic Reconfiguration operation to move the fibre adapter between partitions.

**Answer: B**

4.A client IBM i 7.1 partition is being hosted by dual VIO Server partitions (VIOS-1 & VIOS-2).A Shared Ethernet Adapter (SEA) has been created in order to provide Ethernet failover capability for the IBM i partition.The IBM i partition will use the Ethernet resources of the VIO Server partitions.

How many virtual Ethernet adapters need to be defined on the HMCI in the IBM i client, and VIO Server partition profiles to support SEA and failover?

- A.IBM i Client: 1 adapter: VIOS-1: 1 adapter VIOS-2: 1 adapter
- B.IBM i Client: 2 adapters VIOS-1: 1 adapter VIOS-2: 1 adapter
- C.IBM i Client: 1 adapter VIOS-1: 2 adapters VIOS-2: 2 adapters
- D.IBM i Client: 2 adapters VIOS-1: 2 adapters VIOS-2: 2 adapters

**Answer: C**

5. In addition to Qshell and PASE, what other product needs to be installed on an IBM i partition in order to remotely run scripts on an HMC?

- A. IBM Portable Utilities for i
- B. IBM i Integrated Server Support
- C. IBM Cryptographic Service Provider
- D. IBM Network Authentication Enablement for i

**Answer: A**

6. A customer wants two VIO Servers in the CEO of a proposed Power 720. To provide redundancy for the IBM V7000 SAN they will utilize to provision disk for his client partitions.

What is the minimum required to make this possible?

- A. A 6-disk storage backplane
- B. An 8-disk storage backplane
- C. A 6-disk storage backplane and the split drive bay feature
- D. An 8-disk storage backplane and the split drive bay feature

**Answer: C**

7. A customer has purchased a new BladeCenter H (BCH) and POWER blade to run IBM i. The POWER blade is configured with two Fibre Channel interlaces for attaching SAN and tape.

They have an IBM TS3500 tape library with a fibre channel connection, and current firmware is running through a fibre switch to another IBM i system. One port on the existing switch and one port in the BCH fibre switch has been zoned to provide a connection from the tape library to the BCH.

After IBM i 7.1 SLIC and base OS are installed on the blade from IBM distribution media, the tape library does not appear in the device configuration.

What is the most likely cause of the problem?

- A. The existing switch does not support NPIV.
- B. NPIV enablement was omitted when configuring the BCH switch.
- C. The BCH switch configuration must match the link speed of the TS3500.
- D. A switch-to-switch cable is required. A switch to device cable was shipped with the BCH by default.

**Answer: A**

8. Disk from a fibre-attached V7000 disk subsystem will be used for an IBM i partition.

What type of adapter is required in the IBM i partition?

- A. SAS disk adapter
- B. Virtual SAS adapter
- C. Virtual SCSI adapter
- D. Fibre Channel adapter

**Answer: C**

9. A POWER7 system has 6 IBM i partitions sharing a single shared processor pool. The system has 3 IBM i operating system licenses. Without exceeding the licenses available, what is the largest allowable value for the "Maximum processing units" setting in the shared processor pool?

A. 1

B.2

C.3

D.6

**Answer: C**

10.A customer has several client IBM i partitions, hosted by other IBM i partitions. Corporate IT policy specifies that certain optical and tape resources must not be available to client IBM i partitions. How can these resources be made unavailable to the client partitions?

A. Specify the devices to be unavailable in the Network Server Description.

B. Specify only the devices to be available in the Network Server Description.

C. Remove the unneeded hardware from the hosted partition's profile on the HMC.

D. Secure the device descriptions on the hosting partition with an authorization list.

**Answer: A**

11. Which VIO Server command lets an administrator enter a non-restricted root shell to allow environment setup and installation of vendor software?

A. env\_oem\_setup

B. oem\_env\_setup

C. oem\_setup\_env

D. setup\_oem\_env

**Answer: C**

12. An administrator is designing a client IBM i partition, which will require 1 .4TB of storage, hosted from another IBM i partition. The administrator will configure each virtual disk as 70GB. In addition, the hosting partition will provide the CD and share the internal tape.

What is the minimum number of vSCSI adapters that will need to be defined in each of the client and hosting partitions?

A. 1

B. 2

C. 3

D. 4

**Answer: B**

13. Additional SAN disk volumes have been dynamically presented to a VIO Server (VIOS) partition, and these resources need to be mapped to an IBM i partition. In order for these resources to be visible in the VIOS partition, what is the appropriate next step?

A. As padmin, run cfgmgr in the VIOS partition.

B. Run the cfgdev command in the VIOS partition.

C. Add an SCSI device in the HMC for the client partition.

D. Use the Disk Management function in System Management Services (SMS).

**Answer: B**

14. After using the Advanced Management Module (AMM) to move the BladeCenter's optical drive to a different POWER blade in the same chassis, the VIO Server on the blade from which the drive was

removed still shows it as “available,” while the blade to which it was moved doesn’t reflect ownership of the device. Why is this occurring?

- A. The scheduled inventory refresh has not yet processed.
- B. The IBM i partition which needs the optical device to be varied on with RESTART\*YES in order to be acquired.
- C. The VIO Server which is acquiring the hardware doesn’t have an adapter available to support optical virtualization.
- D. The VIO Servers on each POWER blade need to have actions taken in order to refresh the known inventory of physical hardware.

**Answer: D**

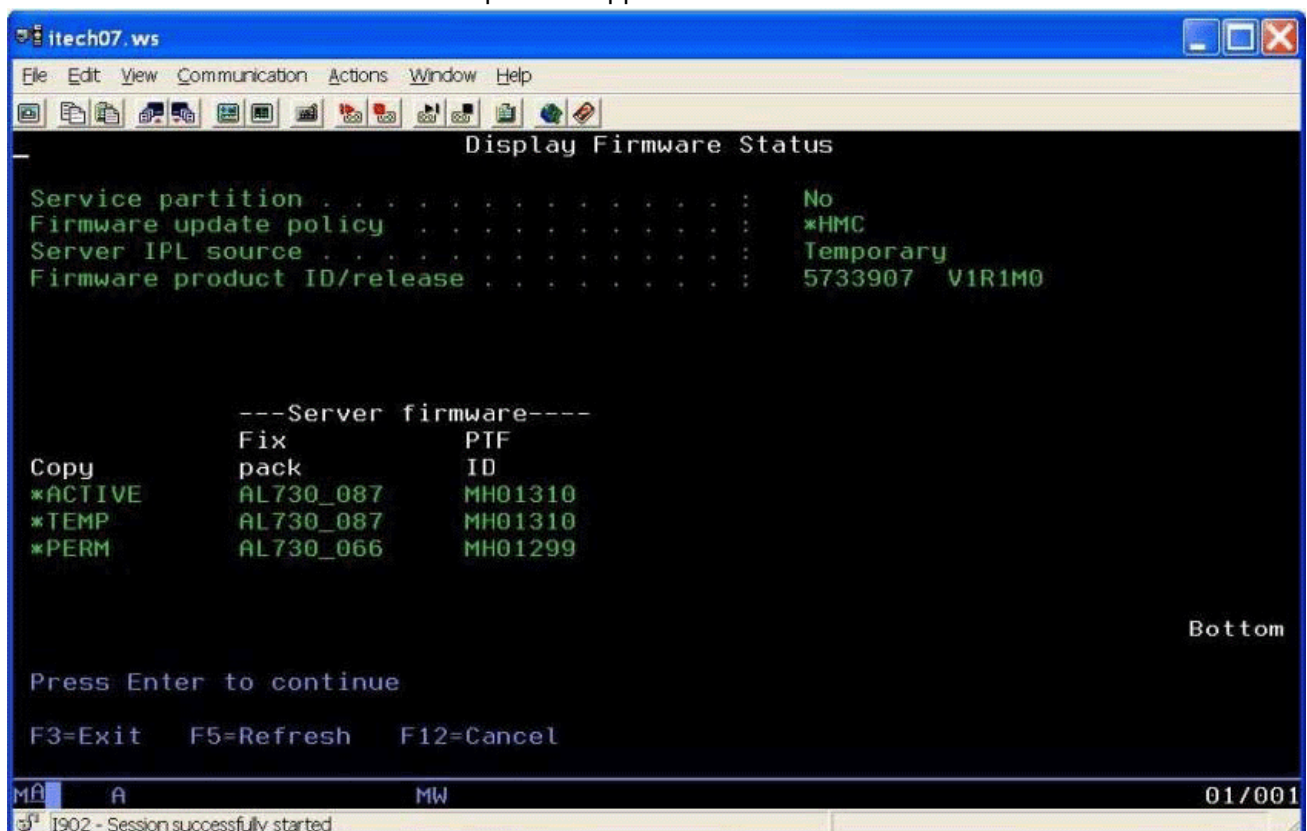
15. A customer would like to implement a client Linux partition on their Power Systems server. There are no available physical network ports on the system.

In addition to configuring the virtual Ethernet adapters in a hosting IBM i partition, what must be configured to allow the client Linux partition to access the network?

- A. Schowler routes
- B. Promiscuous mode
- C. Link aggregation
- D. Network address translation

**Answer: D**

16. The DSPFMWSTS on an IBM i 7.1 partition appears as shown:



As part of troubleshooting, IBM support asks that level AL730\_087 be deactivated. How is that accomplished?

- A.Run command DLTPTF PTF (MH01310) RMV (\*TEMP)
- B.Run command RMVPTF LICPGM (5770SS1) SELECT (MH01310) DELAYED (\*YES), then restart the partition
- C.Stop all partitions Change the managed system to start in "P" mode Restart the managed system From the HMC, select Updates
- D.On the resulting screen, select the managed system Under Tasks select Change Licensed Internal Code for Current Release In the wizard select Deactivate Temporary Level

**Answer: C**

17.A new IBM i client partition has been created.Storage for the client partition is being provided by a hosting IBM i partition.All steps regarding linking of network servers to storage spaces have been performed.When varying on the Network Server Description (NWSA) from the hosting partition, nothing occurs with the new client partition.

What is the most likely reason?

- A.Power control has not been properly configured.
- B.The processor settings are "capped" rather than "uncapped."
- C.Shared memory has not been enabled in the hosting partition.
- D.I\_BASE\_01 media is not in any accessible optical or virtual optical drive.

**Answer: A**

18.A client IBM i partition running 6.1 is being upgraded to 7.1 using an image catalog on an IBM i 6.1 partition.The image catalog is loaded into a virtual optical device and made available to the client partition using a Network Server Description and virtual SCSI adapters.

Which statement is correct?

- A.The next volumes will have to be mounted manually, one by one.
- B.The virtual optical device performs as a library in IBM i 6.1.
- C.The device will show on the client with the same name as on the host.
- D.The virtual optical device should be specified in the NWSA before it can be seen by the client partition.

**Answer: A**

19.Auditors have reviewed access to the HMC and determined that many users have too much authority on the HMC.

What is the correct method to restrict users to only a specific set of resources?

- A.Change the users' task role to hmcooperator.
- B.Create and assign a new task role that allows only the required set of tasks.
- C.In Manage Users and Tasks, select each resource that is required for this user.
- D.Create and assign a new resource role that allows access to only the required resources.

**Answer: D**

20.A client plans to add a Power 770 server to a POWER6 environment.

What resource can the administrator use to determine if the HMC is at the correct level to support the new server firmware?

- A.ASMI
- B.HMC Service Agent

C.Power Code Matrix

D.System Planning Tool

**Answer: C**