

Testpassport**Q&A**



H i g h e r Q u a l i t y

B e t t e r S e r v i c e !

We offer free update service for one year
[Http://www.testpassport.com](http://www.testpassport.com)

Exam : **C2090-013**

Title : IBM SPSS Modeler Data
Mining for Business
Partners v2

Version : DEMO

1.How many phases are in the CRISP-DM Process Methodology?

- A. Four
- B. Five
- C. Six
- D. Seven

Answer: C

2.True or false: the CRISP-DM Process Methodology is a linear process.

- A. True
- B. False

Answer: B

3.Which node is used to read data from a comma delimited text file?

- A. Var. File
- B. Data Collection
- C. Fixed File
- D. Statistics File

Answer: A

4.Examine the Data Audit output shown below.

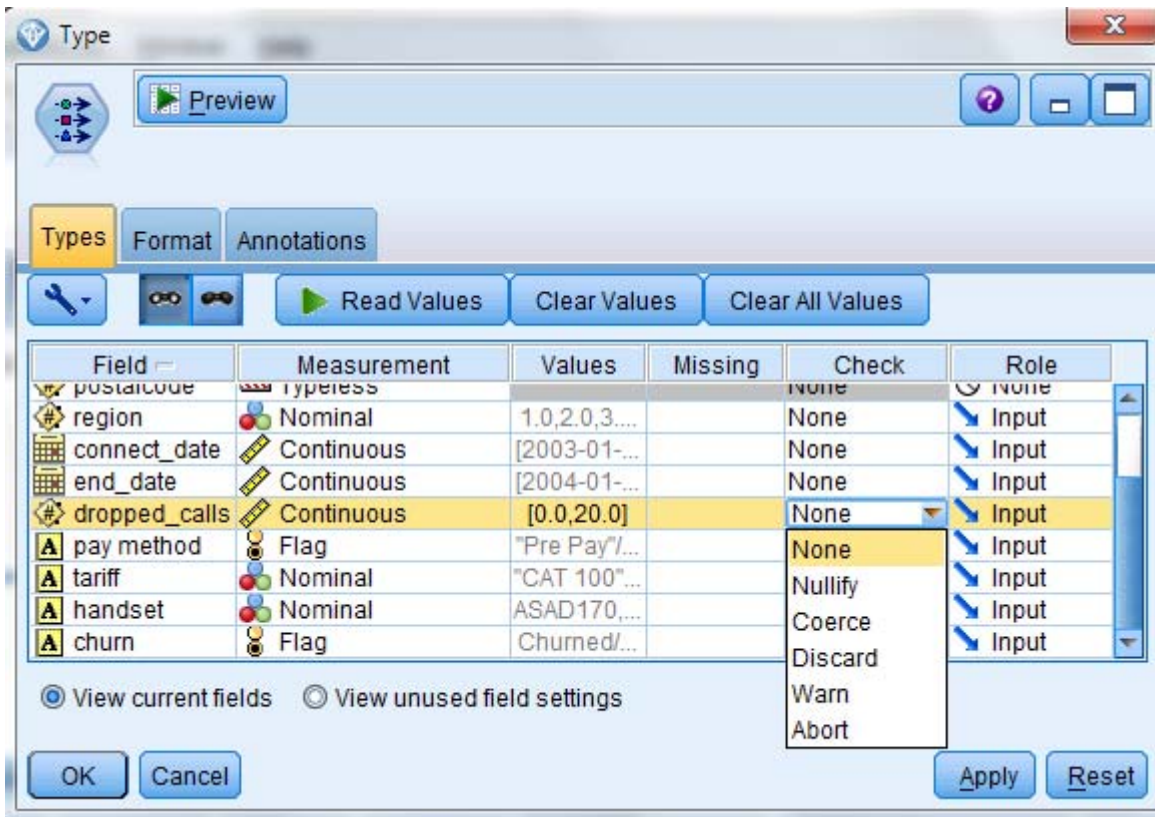
Field	Measurement	Outliers	Extremes	Action	Impute Mi...	Method	% Complete	Valid
ACCOM	Nominal	--	--		Never	Fixed	100	
COUNTRY	Nominal	--	--		Never	Fixed	100	
CUSTID	Nominal	--	--		Never	Fixed	100	
DIST_TO_BE...	Continuous	1	0	None	Never	Fixed	100	
DOB	Nominal	--	--		Never	Fixed	100	
GENDER	Nominal	--	--		Never	Fixed	98.681	
HOLCODE	Nominal	--	--		Never	Fixed	100	
HOLCOST	Continuous	9	1	Discard	Never	Fixed	97.889	
NAME	Nominal	--	--		Never	Fixed	100	
NIGHTS	Continuous	0	0	Nullify	Never	Fixed	100	
NUMPARTY	Continuous	6	0	None	Never	Fixed	100	
POOL	Flag	--	--		Never	Fixed	100	
REGION	Nominal	--	--		Never	Fixed	100	
TRAVDATE	Nominal	--	--		Never	Fixed	100	

What action will occur in a generated Outlier & Extreme Supernode for HOLCOST?

- A. Nine records will be set to the system missing (null) value for HOLCOST.
- B. Ten records will be deleted.
- C. Ten records will be set to the system missing (null) value for HOLCOST.
- D. Nine records will be deleted.

Answer: B

5. Given the Type node shown below, what specifications are necessary to change all values outside the range 1 to 15 in field dropped_calls to the undefined (\$null\$) value?



- A. Pass Values and Check action Nullify
- B. Specify Values Lower 1 and Upper 15 and Check action Nullify
- C. Specify Values Lower 1 and Upper 15 and Check action Discard
- D. Read Values and Check action Warn

Answer: B