

Testpassport**Q&A**



H i g h e r Q u a l i t y

B e t t e r S e r v i c e !

We offer free update service for one year
[Http://www.testpassport.com](http://www.testpassport.com)

Exam : **C2060-218**

Title : IBM Sterling B2B Integrator
V5.2, Solution
Implementation

Version : Demo

1.A company has set up an adapter Container JVM to increase performance and reliability. Which three server adapters are available to be used with the container? (Choose three.)

- A. Connect:Direct
- B. FTP
- C. HTTPS
- D. JMS
- E. OFTP
- F. SMTP

Answer: A,B,C

2.A customer has deployed a two node active-active IBM Sterling B2B Integrator (SBI) cluster in the secure zone on two servers. The customer has installed two servers in the DMZ for the purpose of installing remote SBI Perimeter Servers to facilitate communications with external partners. External partners will connect to an external IP Load Balancer that will distribute inbound FTP/S, SFTP and HTTP Client sessions across the Perimeter Servers. The customer requirement is that if any single server fails, all the other SBI nodes and remote Perimeter Server instances must continue to activelyThe customer.? requirement is that if any single server fails, all the other SBI nodes and remote Perimeter Server instances must continue to actively handle inbound sessions for each protocol. What is the minimum number of remote Perimeter Server instances that must be deployed in the DMZ?

- A. 2
- B. 3
- C. 4
- D. 12

Answer: C

3.A developer has created a Business Process (BP) that uses the File System Adapter to write a file to the file system. Where should the target file name be stored in the BP so that the File System Adapter can retrieve it?

- A. Primary Data
- B. Process Data
- C. Primary Document
- D. Process Document

Answer: B

4.What would cause the IBM Sterling B2B Integrator (SBI) database size to continually grow and thus impact performance?

- A. persistence level set to FULL
- B. improperly sized database connection pools
- C. index, archive, and purge services not running
- D. incorrect number of database threads assigned

Answer: C

5.A Business Process (BP) implementer wants to use the Document Keyword Replace Service in the Graphical Process Modeler (GPM) but the service is not showing in the All Services stencil. What needs

to be done to make the Document Keyword Replace Service show in the GPM?

- A. Update the license file.
- B. Create a service configuration.
- C. Execute install3rdParty.sh/.cmd.
- D. Add JavaTask to adapters.properties.

Answer: B

6.A company wants to change their document storage to file system storage for a IBM Sterling B2B Integrator (SBI) cluster deployment. Which configuration needs to exist?

- A. with a shared file system mounted as /FS: document_dir.jdbc.properties=/shared defaultDocumentStorageType.jdbc.properties=FS
- B. with a shared file system mounted as /FS: document_dir.jdbc.properties=/FS defaultDocumentStorageType.jdbc.properties=shared
- C. with a shared file system mounted as /shared: document_dir.jdbc.properties=/FS defaultDocumentStorageType.jdbc.properties=FS
- D. with a shared file system mounted as /shared: document_dir.jdbc.properties=/shared defaultDocumentStorageType.jdbc.properties=FS

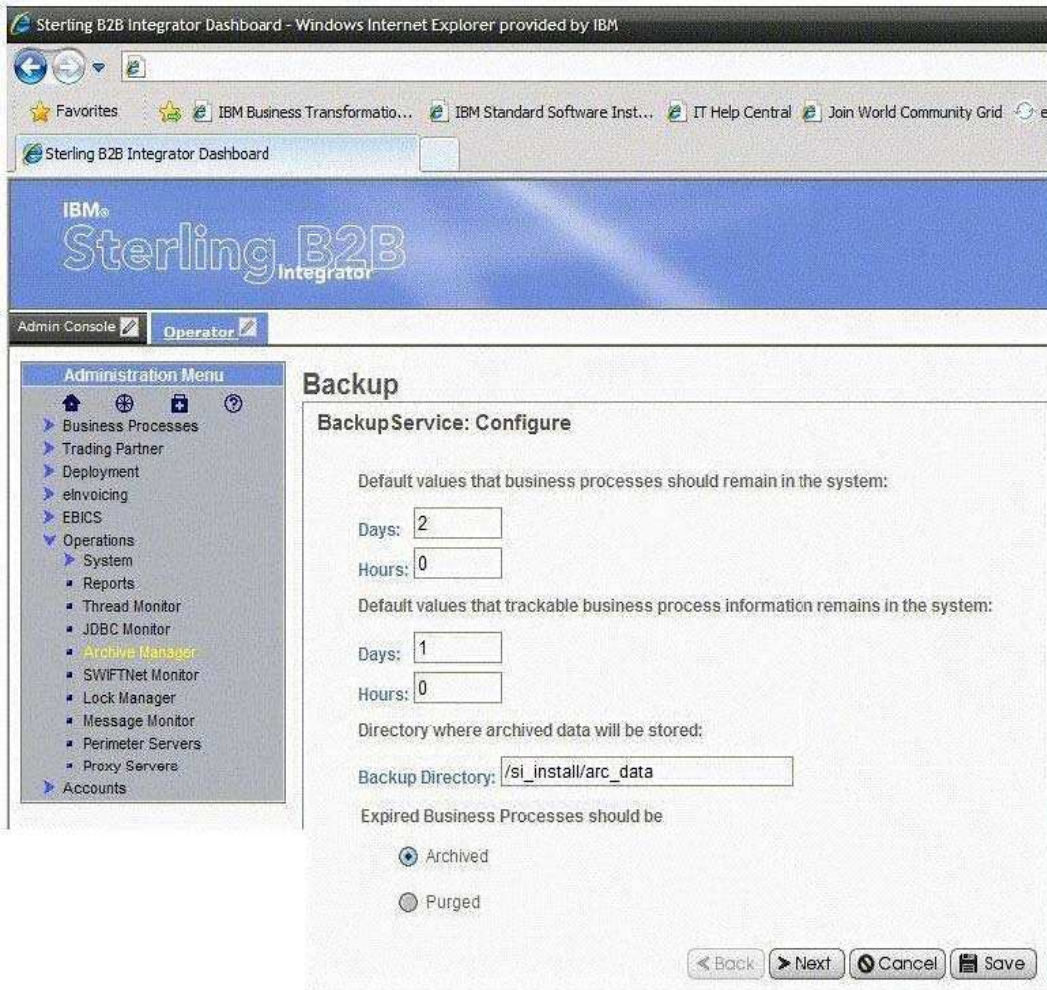
Answer: D

7.The system default for the amount of time a Business Process (BP) remains online in the system is set to five days. How can that value be overridden?

- A. Update noapp.properties.
- B. Modify the lifespan setting for a BP.
- C. Update with the Performance Tuning wizard.
- D. Create a new Retention Service configuration.

Answer: B

8.Based on the screen shot, how many days will documents and other trackable data stay in the system by default?



- A. 1 dayA.1 day
- B. 2 daysB.2 days
- C. 3 daysC.3 days
- D. The setting is controlled at the individual Business Process (BP) level.
- D.The setting is controlled at the individual Business Process (BP) level.

Answer: C

9.Given the following information from the servers.properties file:

noapp=/home/SBI/properties/noapp.properties jboss=/home/SBI/properties/noapp.properties

jdbcService=/home/SBI/properties/jdbc.properties

jdbcServiceCustomer=/home/SIB/properties/jdbc_customer.properties

si_config=/home/SBI/properties/sandbox.cfg

customer_overrides=/home/SBI/properties/customer_overrides.properties

filesystem=/home/SBI/properties/filesystem.properties

The customer would like to change the default directory to store on-disk documents to a new directory.

How should this override be configured in the system?

- A. Edit sandbox.cfg and add document_dir=<new directory full path>.
- B. Edit filesystem.properties and add filesystem.document_dir=<new directory full path>.
- C. Edit customer_overrides.properties and add jdbcService.document_dir=<new directory full path>.

D. Edit jdbc_customer.properties and add jdbcServiceCustomer.document_dir=<new directory full path>.

Answer: C

10. Of the locations where persistence levels can be set, which has the highest precedence?

- A. Global
- B. System
- C. Trading Partner
- D. Business Process (BP) Definition

Answer: D

11. A company allows trading partners to send files to it via SFTP. Which port needs to be configured on the SFTP Server adapter to define the communication port?

- A. Data Port
- B. Send Port
- C. Listen Port
- D. Passive Port

Answer: C

12. A company is planning to offer FTPS connection to its community of trading partners. They already have one server certificate in IBM Sterling B2B Integrator (SBI) that they want to use for the FTPS server in the production environment. In the development environment they want to use a self-signed test certificate. Where can the test certificate be created?

- A. Trading Partner > Digital Certificates > CA
- B. Trading Partner > Digital Certificates > Trusted
- C. Trading Partner > Digital Certificates > System
- D. Trading Partner > Digital Certificates > Cert Manager

Answer: C

13. IBM Sterling B2B Integrator (SBI) is installed with a LDAP connection to allow users to log in using their username/password stored in the LDAP server. A user is created in SBI as a local user and the InternalUser password policy is specified. The InternalUser policy states that the password has to be changed every 30 days. After 29 days the SBI security administrator deletes the InternalUser policy from the system. When the user logs in two days later, will the user be prompted to change the password?

- A. Yes, because of the configuration of the original password policy.
- B. No, because the policy is deleted so the user has no password policy.
- C. The user will not be logged in because there is no valid policy specified.
- D. No, the policy is irrelevant since the password is managed by the LDAP server.

Answer: B

14. A company requires FTP users to be unable to login after five failed login attempts. How can this be accomplished?

- A. Create a Lockout Policy.
- B. Configure the FTP user account.
- C. Configure a LoginPolicy service configuration.

D. Add an entry to customer_overrides.properties.

Answer: A

15. IBM Sterling B2B Integrator (SBI) uses a certificate to encrypt persisted documents. If this certificate needs to be replaced with a deployment specific certificate, which certificate store is the new certificate imported into before updating the certificate name in the customer overrides property file?

A. CA

B. Trusted

C. System

D. Certificate

Answer: C