

Testpassport**Q&A**



H i g h e r Q u a l i t y

B e t t e r S e r v i c e !

We offer free update service for one year
[Http://www.testpassport.com](http://www.testpassport.com)

Exam : **070-234**

Title : Designing and Implementing
Solutions with Microsoft
Commerce 2000 Server

Version : DEMO

1. You are developing a Commerce Server site for a company. The site is based on the Retail Solution Site. On the homepage, the site displays headlines that link to press releases that contain information about products and services that the company is offering. You want to choose which press release headlines to display to each user, based on priority, date released, and user-defined preferences. What should you do?

- A. Modify the Scoring stage of the Content Selection Framework (CSF) pipeline.
- B. Modify the Selection stage of the Content Selection Framework (CSF) pipeline.
- C. Use the Predictor resource to create a custom Segment model.
- D. Use the Predictor resource to create a custom Prediction model.

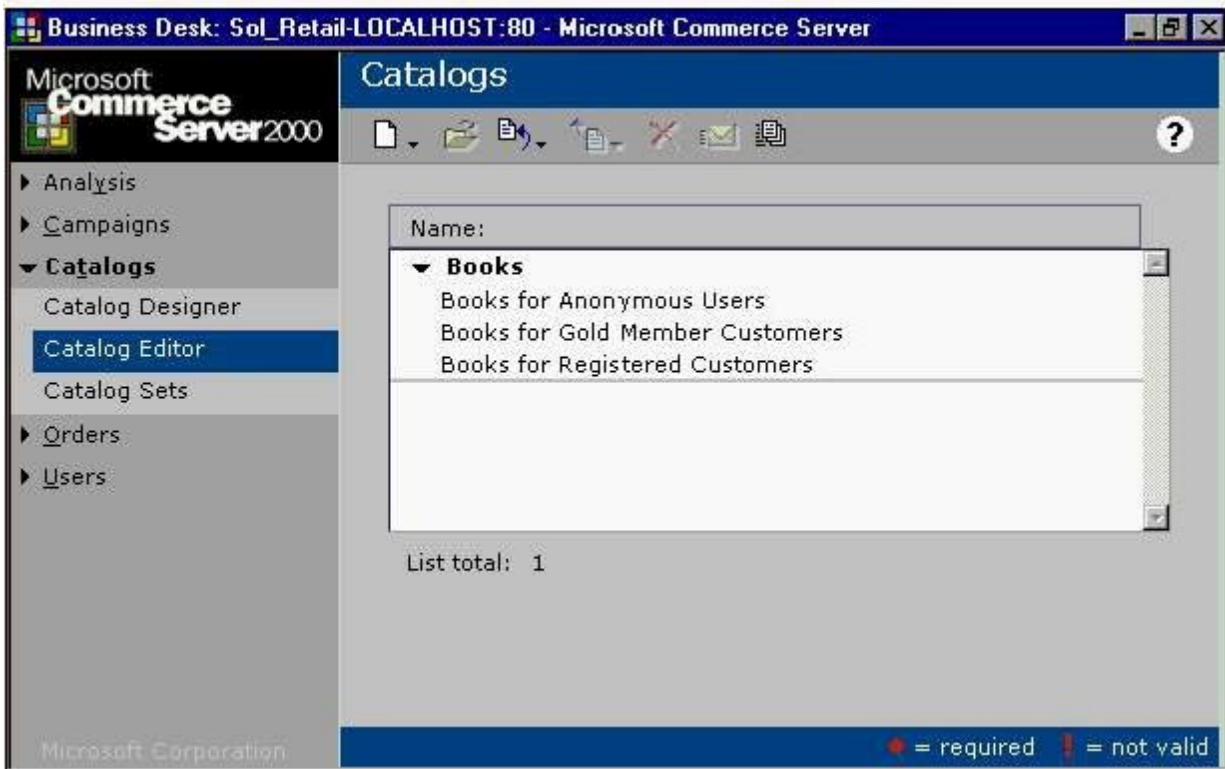
Answer:A

2. You are the business manager for a Commerce Server site. You are creating catalogs for the site. The site is visited by users from multiple countries. You want catalog product descriptions to be displayed in a user's default language. The default language will be set by the user's browser settings. In the event that the default language is not available, the catalog product description will be shown in English. All prices will be shown in U.S. dollars. You want to minimize catalog maintenance. How should you create the catalogs?

- A. Create a base catalog for each language that is supported. Create catalog sets for each base catalog.
- B. Create a base catalog for each language that is supported. Use custom code to display the appropriate catalog for the user.
- C. Create a base catalog for the English language. Create a custom catalog for each other language that is supported.
- D. Create a base catalog and provide a different description field for each language that is supported. Use custom code to display the appropriate description field for the user.

Answer: D

3. You are a business manager for a Commerce Server site. You manage the four catalogs shown in the exhibit. (Click the Exhibit button.) You want to delete only the Books catalog. What should you do?



- A. First, delete all catalog sets that contain the Books catalog. Next, delete the Books catalog. Then, create one catalog set for the Books for Anonymous Users catalog, one catalog set for the Books for Gold Member Customers catalog, and one catalog set for the Books for Registered Customers catalog.
- B. First, delete all catalog sets that contain the Books catalog. Next, create one catalog set for the Books for Anonymous Users catalog, one catalog set for the Books for Gold Member Customers catalog, and one catalog set for the Books for Registered Customers catalog. Then, delete the Books catalog.
- C. First, publish the Books for Anonymous Users catalog, the Books for Gold Member Customers catalog, and the Books for Registered Customers catalog. Next, delete the Books catalog. Then, create one catalog set for the Books for Anonymous Users, one catalog set for the Books for Gold Member Customers, and one catalog set for the Books for Registered Customers catalog.
- D. First, export the Books for Anonymous Users catalog, the Books for Gold Member Customers catalog, and the Books for Registered Customers catalog. Next, delete the Books catalog. Then, import the Books for Anonymous Users catalog, the Books for Gold Member Customers catalog, and the Books for Registered Customers catalog.

Answer: D

4. You are the business manager for a Commerce Server site. You want to allow users to enter the birthdays of people they know. Seven days prior to an entered birthday, the site will send an e-mail message to remind the user about the birthday and will also present a reminder that the user will see upon login on the Web site. The site will give the user the options of selecting an electronic birthday card and purchasing a gift. How should you implement this functionality?

- A. Create a site term named Birthday, and extend the UserObject profile to use the site term. Store entered birthdays as Birthday site terms.
- B. Create a data code named Birthday, and extend the UserObject profile to use the data code. Store entered birthdays as Birthday data codes.
- C. Create a profile definition named Birthday. Store a reference to the UserObject profile on each Birthday profile.
- D. Create a profile definition named Birthday. Create a site term named Birthday that contains Birthday profiles. Store entered birthdays as Birthday profiles. Store a reference to the UserObject profile on each Birthday site term.

Answer: C

5. You are the administrator for a Commerce Server site. Users report declining performance on the site, especially when they are viewing catalog pages. You monitor the Catalog Queries per second performance counter. You expect the counter to indicate five catalog queries per second. However, the counter indicates 50 catalog queries per second. You separate the database server from the Web server. You want to reduce the catalog queries per second. What should you do?

- A. Use application caching code.
- B. Run the Product Catalog database on the Web server.
- C. Run the catalog database in read-only mode.
- D. Separate the catalog tables from the Product Catalog database, and save the catalog tables in a separate database.

Answer:A

6. You are a business manager for a Commerce Server site. The site will offer only one shipping method. You want to offer free shipping on all orders that total 100.00 dollars or more. For orders that total less than 100.00

dollars, you want to charge for shipping according to the rates shown in the following table.

Order weight	Shipping charge
Up to 25 lbs.	4.00 dollars
Up to 75 lbs.	8.00 dollars
Up to 85 lbs.	10.00 dollars
Over 85 lbs.	15.00 dollars

Which two courses of action should you perform to implement this shipping-rate structure? (Each correct answer presents part of the solution. Choose two.)

A. Create a discount that has a definition that allows a customer who buys 100.00 dollars of any product to get freeshipping.

B. In order to compensate for the shipping charge, create a discount that has a definition that allows a customer who buys

100.00 dollars of any product to get 15.00 off.

C. Create a Charge by Subtotal shipping method. Enter a shipping charge of 0.00 dollars for all subtotals greater than 99.99 dollars.

D. Create a Charge by Subtotal shipping method. Enter a shipping charge of 0.00 dollars for all subtotals less than 100.00 dollars.

E. Create a Charge by Weight shipping method. Enter the appropriate shipping charge from the table.

Answer:AE

7. You are a business manager for a Commerce Server site. A customer orders two paid ads for a sale. The ads are named advertisement A and advertisement B. The customer wants each ad to be displayed 15,000 times, for a total of 30,000times. The campaign is goaled at the campaign level. The campaign is scheduled to run for six weeks. Three weeks after the campaign starts, the customer requests that advertisement A be displayed twice as often asadvertisement B. The customer still wants the ads to run a total of 30,000 times. Which changes should you make to fulfill the customer's request?

A. Edit advertisement A by changing the weight to 2. Edit advertisement B by changing the weight to 1.

B. Edit advertisement A by changing the quantity to 20,000. Edit advertisement B by changing the quantity to 10,000.

C. Set the campaign goaling at the advertising item level.Edit advertisement A by changing the weight to 2.Edit advertisement B by changing the weight to 1.

D. Set the campaign goaling at the advertising item level. Edit advertisement A by changing the quantity to 20,000. Edit advertisement B by changing the quantity to 10,000.

Answer:A

8. You are deploying a Commerce Server site to the production environment. You notice that each time users visit the sitethey are automatically logged in without being prompted for their user name and password. You need to ensure that the site does not allow users to be automatically logged in. How should you configureauthentication on the site?

A. Configure the site to use Custom Authentication mode with the Autocookie check box selected.

B. Configure the site to use Windows Authentication mode with the Autocookie check box selected.

- C. Configure the site to use No Filter mode with the Autocookie check box cleared.
- D. Configure the site to use Filter Enabled mode with the Autocookie check box selected.

Answer: C

9. You are preparing to import user data into a Commerce Server site for deployment into the production environment. The Profiles global resource data source is partitioned. You plan to use a Microsoft SQL Server-Active Directorypartition configuration in the future. You will be required to import user data into the Active Directory partition at thattime. Based on the amount of data, you estimate that the current import tasks will take 25 hours to complete. You begin toimport the data by using a custom ASP page. Ninety seconds after the import starts, you receive an error message stating that the process has timed out. What should you do to successfully import the data?

- A. Edit the ASP page to change the value for the Session.Timeout property to 25 hours.
- B. Edit the ASP page to change the data connection timeout to 25 hours.
- C. Create a custom script for bulk data imports by using .vbs files and the Microsoft OLE DB Provider for Commerce Server.
- D. Create a custom script for bulk data imports by using .vbs files and the Microsoft OLE DB Provider for SQL Server.

Answer: C

10. You are a developer for Northwind Traders. The company wants to expand their existing Commerce Server site by adding an auction application to the site.

Northwind Traders wants to minimize the downtime for their site during the deployment of the new auction application.You have permission from Northwind Traders to manually replace the single include file that will contain hyperlinks tothe auction application. Northwind Traders will allow you to copy this file after the auction application is unpacked.The auction application is based on the Auction Sitelet. The framework that is provided in the sitelet was customized tomatch the user interface (UI) of the Northwind Traders site.The auction application exists in the staging environment. You need to package and unpack the auction application.What should you do?

- A. Package only the auction application by using Site Packager. Enable the Custom unpack option and then enable the Add an application in the package to an existing site option.Select the auction application to unpack.Update the include file manually.
- B. Package the entire site. Enable the Quick unpack option to update the entire site.

C. Package the entire site. Enable the Custom unpack option and enable the Add an application in the package to an existing site option. Select the auction and Business Desk applications to unpack. Update the include file manually.

D. Package the entire site. Enable the Custom unpack option and enable the Add an application in the package to an existing site option. Select only the auction application to unpack. Update the include file manually.

Answer: D