

# **T**estpassport**Q&A**



---

**H i g h e r   Q u a l i t y**

**B e t t e r   S e r v i c e !**

We offer free update service for one year  
[Http://www.testpassport.com](http://www.testpassport.com)

**Exam** : **050-695**

**Title** : Novell eDirectory Design  
and  
Implementation:eDirectory  
8.8

**Version** : DEMO

**1.Which replica type contains only the partition root object?**

- A.Master
- B.Read-only
- C.Read/write
- D.Filtered replica
- E.Subordinate reference

**Correct:E**

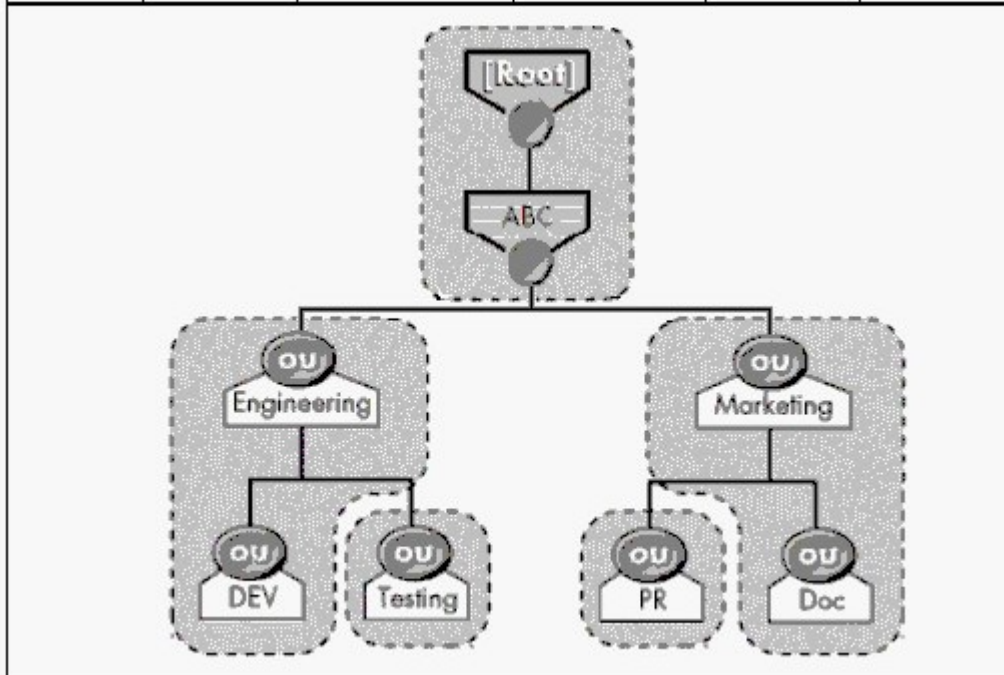
**2.Which statements are true regarding the placement of eDirectory objects? (Choose 2.)**

- A.Place application objects in their own container.
- B.Don't place user objects near the top of the tree.
- C.If possible, don't place objects deep within a tree.
- D.If possible, don't place server objects within the same container.
- E.Server objects should be placed near the user objects they are servicing.

**Correct:C E**

**3.Examine the exhibit by clicking the Exhibit button. How many subordinate references will exist in this tree?**

Server	[Root]	Engineering	Marketing	Testing	PR
Serv1	Master	Master	Master	Master	Master
Serv2	R/W		R/W		
Serv3		R/W		R/W	
Serv4	R/W				R/W
Serv5	R/W		R/W		
Serv6	R/W	R/W			



- A.3
- B.5
- C.6
- D.7
- E.8
- F.9
- G.12

**Correct:E**

**4.Which of the following is most important to consider when designing the upper layers of an eDirectory tree?**

- A.Time synchronization strategy
- B.Number of objects in the tree
- C.Number of servers in the tree
- D.Physical network infrastructure
- E.Number of partitions and replicas

**Correct:D**

**5.What is the most important design consideration when designing the upper layers of an eDirectory tree?**

- A.Partition and replica plan
- B.Time synchronization strategy
- C.Number of objects in the tree
- D.Number of servers in the tree
- E.Physical network infrastructure

**Correct:E**

**6.What is a part of analyzing user needs when creating an accessibility needs analysis document?**

- A.Design a strategy for mobile users.
- B.Specify ZENworks object configurations.
- C.Specify security rights to particular objects.
- D.Gather information related to physical network resource needs.
- E.Create guidelines that determine how eDirectory objects are used to create the user environment.

**Correct:D**

**7.What tasks are helpful in completing a needs analysis when designing an eDirectory tree? (Choose 2.)**

- A.Gather information about network connectivity
- B.Gather information about resources that users access
- C.Gather information to decide on a replica placement strategy
- D.Gather information to estimate the time for each phase of design
- E.Gather information to decide which server should be the time provider

**Correct:A B**

**8.Which statement is true about eDirectory partitions?**

- A.Partitions can overlap each other.
- B.A container object can reside in 2 partitions.
- C.A partition provides fault tolerance for the file system.
- D.Partitions are logical divisions of eDirectory that enable the database to be divided among several

servers.

**Correct:D**

**9.Which statement is true regarding the Priority Sync feature?**

- A.Priority Sync is supported only between two or more eDirectory 8.8 servers hosting any partition.
- B.Priority Sync is supported only between two or more eDirectory 8.8 servers hosting the root partition.
- C.Priority Sync is supported only between two or more eDirectory 8.8 servers hosting the same partition.
- D.Priority Sync is supported only between two or more eDirectory 8.8 servers hosting parent or child partitions.

**Correct:C**

**10.Which statement is true regarding the function-based design for the upper layers of your eDirectory tree?**

- A.It is the best design type to handle future growth.
- B.It should be used if there is a WAN in the network.
- C.It is best for small networks that do not span more than one location.
- D.It is a more difficult type of design for the upper layers of your tree.
- E.It should be used if there are multiple organization objects in the tree.

**Correct:C**