

Testpassport**Q&A**



H i g h e r Q u a l i t y

B e t t e r S e r v i c e !

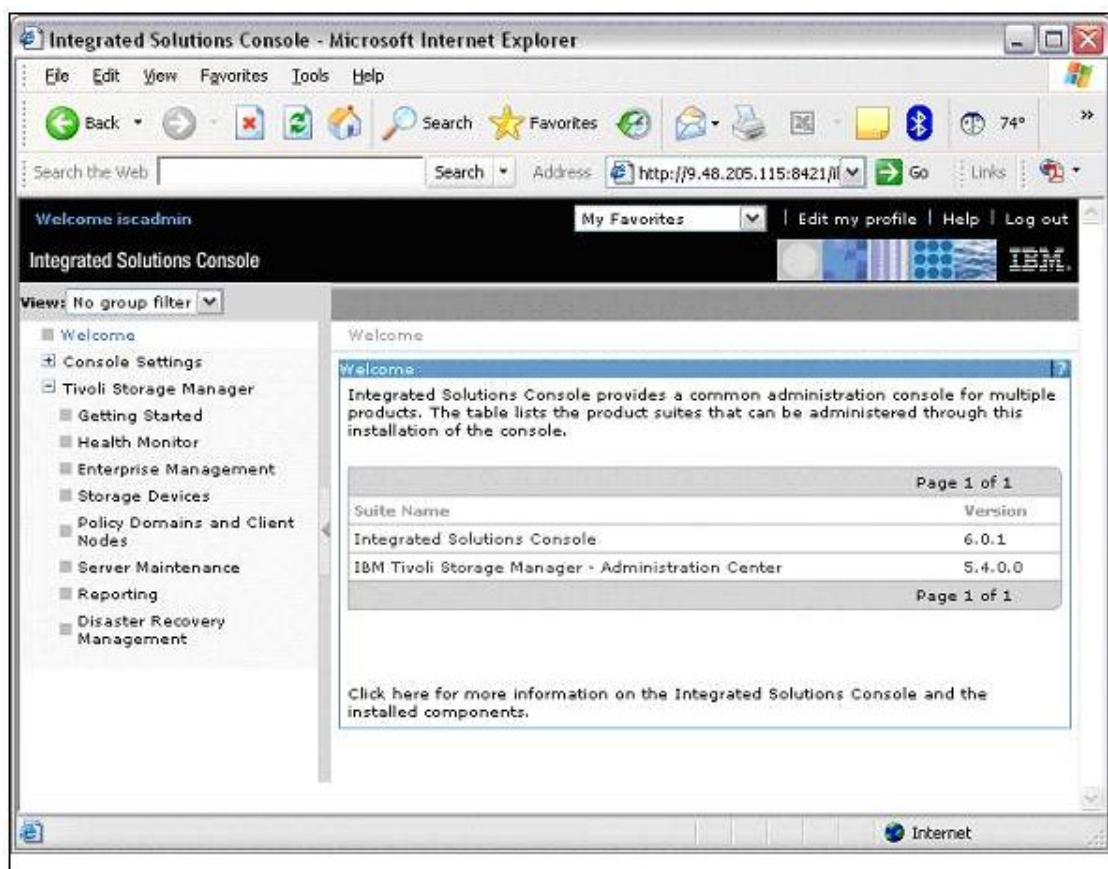
We offer free update service for one year
[Http://www.testpassport.com](http://www.testpassport.com)

Exam : **000-904**

Title : IBM Tivoli Storage Manager
v5.3&v5.4 Operator

Version : DEMO

1.Click the Exhibit button. The exhibit shows the IBM Tivoli Storage Manager (TSM) Administration Center. From which three TSM Administration Center menus is the Use Command Line option available? (Choose three.)



- A.Reporting
- B.Getting Started
- C.Storage Devices
- D.Console Settings
- E.Server Maintenance
- F.Policy Domains and Client Nodes

Correct:C E F

2.How can you monitor a client backup session?

- A.issue a query process command and search for your backup target nodename
- B.issue the command query session nodename= format=detail
- C.issue a query stgpool pooltype=primary command on a regular basis and note the Pct Util value
- D.issue the command query session on a regular basis and note the status of the session where the Client Name matches your target

Correct:D

3.An IBM Tivoli Storage Manager operator receives a request for a file that was archived. Which function should be used to obtain the file?

- A.Recall
- B.Restore
- C.Retrieve

D.Automated System Restore (ASR)

Correct:C

4.Which command displays the backup action for the schedule named DBWeekly?

A.query cloptset

B.query node type=client f=d

C.query session format=detail

D.query schedule standard DBWeekly format=detail

Correct:D

5.Which command is used to remove tapes from a library?

A.remove libvol

B.remove volume

C.checkout libvol

D.checkout volume

Correct:C

6.Click the Exhibit button. The information displayed in the exhibit is the output of which command?

Issue administrative commands to the server. Use the "help" command for more information, including command syntax.

Library Name	Drive Name	Device Type	On-Line
SUNLIB	DRIVE1	DLT	Yes
SUNLIB	DRIVE2	DLT	Yes
SUNLIB	DRIVE3	DLT	Yes

A.query path

- B.query mount
- C.query drive
- D.query active

Correct:C

7.A client backup request is not working. What is the first step an operator should take to attempt to restore functionality?

- A.verify the client has the Client Java Backup GUI installed
- B.ping the node from the IBM Tivoli Storage Manager Administrative command line
- C.query the node to verify communications between the client and server with query node
- D.verify that the node is defined and if it is not, query the Activity Log to determine who deleted it and at what time

Correct:D

8.What should be included with the Disaster Recovery tapes that go off-site?

- A.a full database backup
- B.a full Recovery Log backup
- C.a journal-based database backup
- D.a journal-based Recovery Log backup

Correct:A

9.You have twelve tape drives available to be used in a restore, but a client is only using two. What should you check?

- A.the streams setting in the dsm.opt
- B.the adaptivesubfile setting in the dsm.opt
- C.the resourceutilization setting in the dsm.opt
- D.dynamicdataconsolidation setting in the dsm.opt

Correct:C

10.Which command does an operator use to determine the privilege class of an administrator?

- A.query content
- B.query association
- C.query admin
- D.query privilege

Correct:C

11.What does the client option set provide?

- A.a centralized set of client options
- B.a method to update the client's dsm.opt file
- C.a method to make a clients backup portable
- D.IBM Tivoli Storage Manager parameters for windows-based clients

Correct:A

12.What could help performance for a very large file backup?

- A.NPBUFfersize
- B.COMMTimeout
- C.DBPAGEshadow
- D.DRIVEAquireretry

Correct:B

13.While reviewing the Daily Report, you find a schedule restore job missed the schedule time

allocated. Which two actions should you take to determine the cause? (Choose two.)

- A.check to see if the file was backed up
- B.check to see if the storage pools are full
- C.check to see if any scratch tapes are available
- D.check to see if the Client Scheduler Service is running on the client
- E.check the Activity Log to identify what happened during the scheduled period

Correct:D E

14.Tape processing has stalled due to lack of scratch tapes. Which action needs to be taken?

- A.run migration on the tape storage pool
- B.run compression on the tape storage pool
- C.move available backups to the active pool
- D.check in a set of empty tapes to the library

Correct:D

15.How do you mark disaster recovery media for off-site movement?

- A.move the media readwrite access control pin to Protected
- B.issue the command move drmedia tostatae=vault
- C.issue the command update volume access=offsite
- D.issue the command move libvolume

Correct:B

16.A check-in command has been issued to add volumes to the library. A request has been generated. Which command allows the operator to respond?

- A.reply
- B.prompt
- C.answer
- D.respond

Correct:A

17.In IBM Tivoli Storage Manager (TSM), where can errors that occurred during a scheduled backup be found? (Choose two.)

- A.the Activity Log
- B.the Client Error Log
- C.the Client Statistics Log
- D.the TSM Server System Log
- E.the Backup Summary panel of the TSM Administration Center

Correct:A B

18.Which category of files does the default backup/archive client GUI restore display?

- A.only inactive files
- B.only active backup files
- C.only incremental backup files
- D.active and inactive backup files

Correct:B

19.Which client option is required in order for the Backup/Archive client to communicate with the IBM Tivoli Storage Manager server?

- A.nodename
- B.servername

C.passwordaccess generate

D.communicationmethod TCP/IP

Correct:B

20.An operator notes that a tape is stuck in a tape drive. The operator opens the door to the library and puts the tape in the first available open slot and closes the door. What are the consequences?

A.An audit volume will need to be run on the volume in question to ensure that the IBM Tivoli Storage Manager (TSM) knows the proper slot for the volume.

B.An audit will need to be run on the library to align the TSM database locations with the locations of the actual tapes.

C.All the tapes will need to be removed from the library and checked back in to make sure they are all in the right slots.

D.The library should work without the need for additional action since it will do an audit of all the volumes when the door closes.

Correct:B