

# **T**estpassport**Q&A**



---

**H i g h e r   Q u a l i t y**

**B e t t e r   S e r v i c e !**

We offer free update service for one year  
[Http://www.testpassport.com](http://www.testpassport.com)

**Exam : HP0-M18**

**Title : HP LoadRunner Software**

**Version : Demo**

1. Which option in the Analysis tool allows you to compare a measurement in a graph with other measurements during a specific time range of a scenario and view similar trends?

- A. Drill Down
- B. Apply Filter
- C. Merge Graphs
- D. Auto Correlate

Answer: D

2. Which Analysis graph details transaction response times as a function of load?

- A. Transactions per Second
- B. Average Transaction Response Time
- C. Transaction Response Time Under Load
- D. Transaction Response Time (distribution)

Answer: C

3. During analysis of a scenario, you realize that the throughput becomes flat as Vusers continue to increase. What is the likely cause?

- A. a bandwidth problem
- B. a database server problem
- C. a web server connection problem
- D. an application server connection problem

Answer:A

4. Which option in the Analysis tool allows you to see the results of two graphs from the same load test scenario in a single graph?

- A. Drill Down
- B. Apply Filter
- C. Merge Graphs
- D. Auto Correlate

Answer: C

5. Which Analysis graph shows the number of transactions against transaction response times?

- A. Transactions per Second
- B. Average Transaction Response Time
- C. Transaction Response Time Under Load
- D. Transaction Response Time (distribution)

Answer: D

6. In the Analysis tool, what allows you to modify the scale of the x-axis?

- A. think time
- B. granularity
- C. event type
- D. transaction hierarchical path

Answer: B

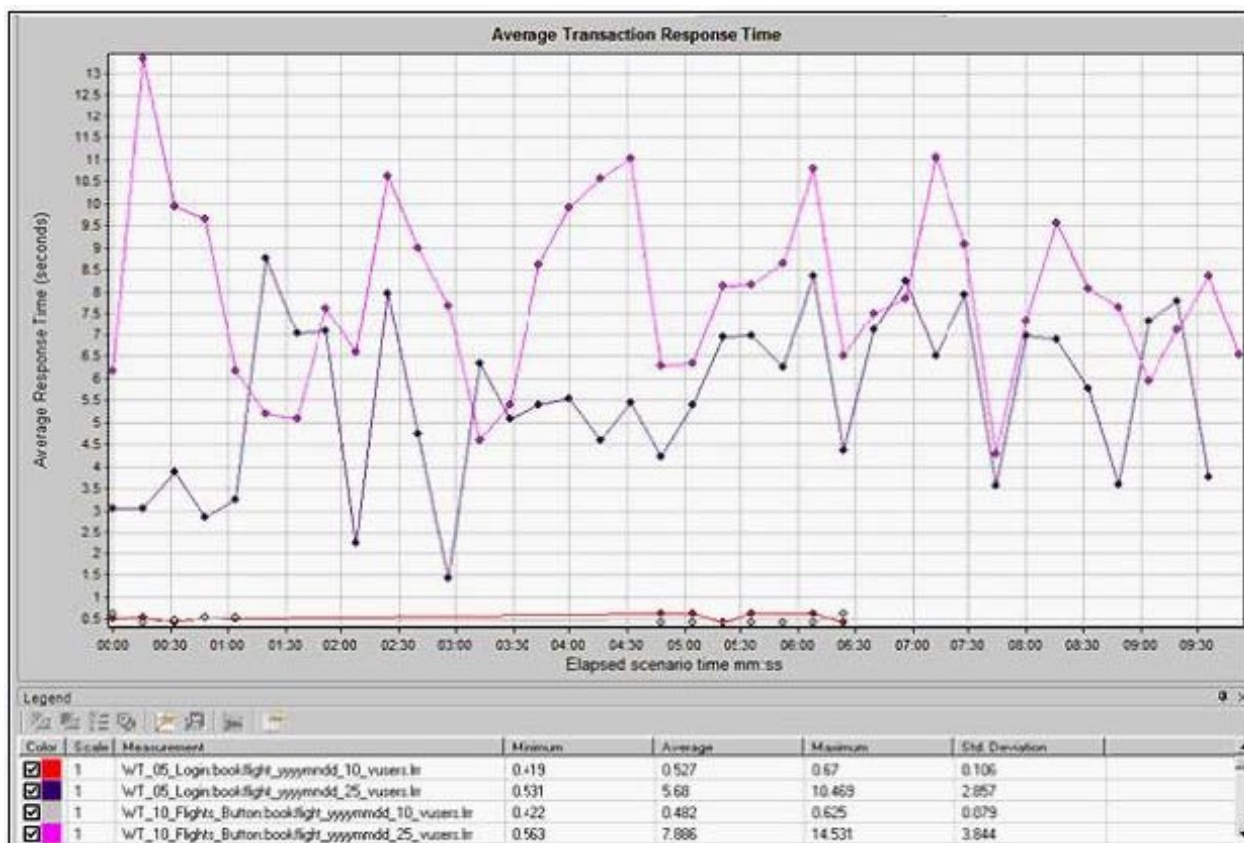
7. Which Analysis graph details the delay for the complete path between the source and destination machines?

- A. MS IIS
- B. Windows Resource
- C. Network Delay Time
- D. Time to First Buffer Breakdown

Answer: C

8. Click the Exhibit button.

Which type of graph does the image in the exhibit represent?



- A. Merged graph
- B. Drill Down graph
- C. Cross Scenario graph
- D. Auto Correlated graph

Answer: C

9. What does the elapsed time in the Scenario Status window refer to?

- A. the time that has elapsed from when all Vusers have finished Initializing
- B. the time that has elapsed from when all Vusers were in the running state
- C. the time that has elapsed from when you press the start Scenario button
- D. the time that has elapsed from when the first Vusers entered the running state

Answer: C

10. You configure a scenario to start with a delay of <05:00:00> (HH:MM:SS) just before leaving from work. You return the next morning to find that the scenario did not run. Why would this happen?

- A. You failed to save the scenario.
- B. You failed to save the schedule.
- C. You failed to connect to the load generators.
- D. You failed to press the START SCENARIO button.

Answer: D

11. After the scenario execution, which LoadRunner component is responsible for collecting and organizing the performance data?

- A. VuGen
- B. Analysis
- C. Controller
- D. load generator

Answer: C

12. Where in the Run-time settings can you define to only send messages when an error occurs?

- A. General: Log
- B. General: Run Logic
- C. General: Miscellaneous
- D. General: Additional Attributes

Answer:A

13. You are running a test and notice that during the ramp up, the response times are beginning to drastically increase. How can you instruct LoadRunner to stop ramping up Vusers and hold the current number?

- A. press the STOP button on the Controller's main window
- B. press the PAUSE button on the Interactive Schedule graph
- C. select the option to wait for the current iteration to end before stopping
- D. select the Vusers in the Ready state from the Vusers window and click the STOP button

Answer: B

14. Which scenario execution run allows you to verify the system performs as expected under load?

- A. Debug
- B. Full Load
- C. Top Time
- D. Scalability

Answer: B

15. When you specify to iterate a script 10 times, which sections of the script are iterated?

- A. group
- B. action
- C. vuser\_init
- D. vuser\_end

Answer: B

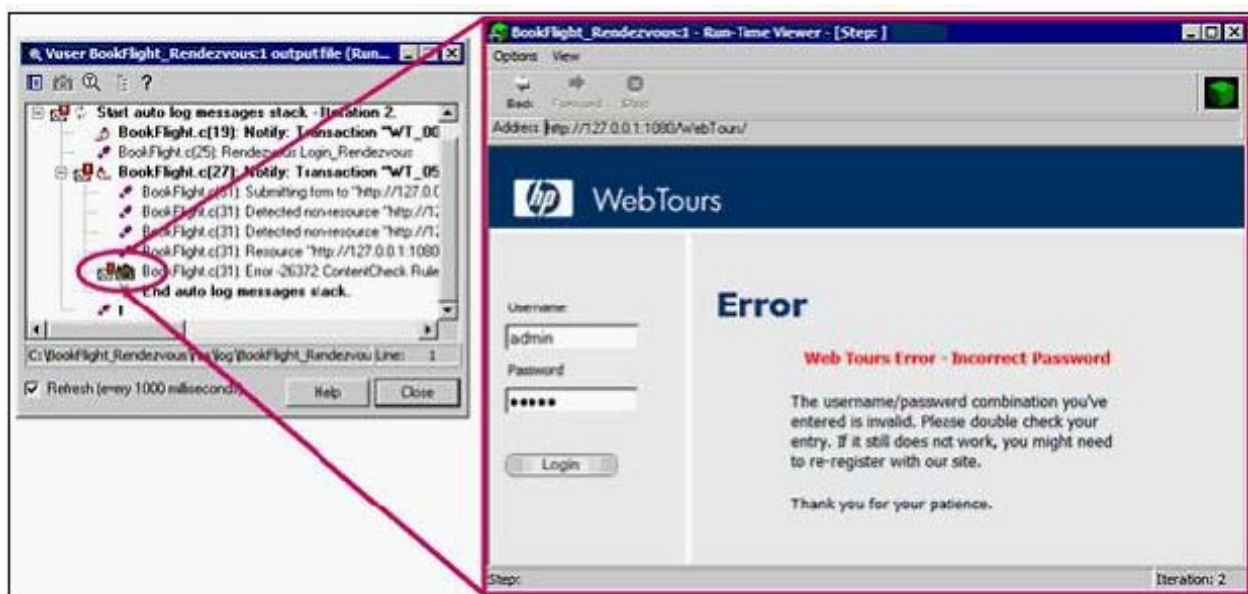
16. Where are the results stored during the run of a scenario?

- A. Analysis
- B. Controller
- C. utility server
- D. load generator

Answer: D

17. Click the Exhibit button.

What does the image shown in the exhibit represent?



- A. Thumbnail
- B. Extended Log
- C. Content Check
- D. Snapshot on Error

Answer: D

18. When you define a rendezvous point in a scenario, where should the `lr_start_transaction` function be placed?

- A. at the end of the action section
- B. at the beginning of the action section
- C. immediately after the rendezvous function
- D. immediately before the rendezvous function

Answer: C

19. While analyzing the Vuser log files from a scenario run, you see the following log file from one of the Vusers.

Start auto log message stack - Iteration 1.

Starting action BookFlight.

BookFlight.c(5): Notify: Transaction WT\_00\_Home\_Page started.

BookFlight.c(7): Error -27796: Failed to connect to server 27.0.0.1:1080 [10061]

End auto log message stack.

What was the Run-time setting, Logging option set to?

- A. Standard Logging
- B. Extended Logging
- C. Always send a message
- D. Send a message only when an error occurs

Answer: D

20. When scheduling by scenario, to which group(s) does the defined schedule apply?

- A. all groups in the scenario
- B. only the first group in the scenario
- C. only the selected group in the scenario
- D. only the selected group in the scenario scheduler

Answer:A