

Testpassport**Q&A**



H i g h e r Q u a l i t y

B e t t e r S e r v i c e !

We offer free update service for one year
[Http://www.testpassport.com](http://www.testpassport.com)

Exam : **1z0-041**

Title : Oracle Database 10g: DBA
Assessment

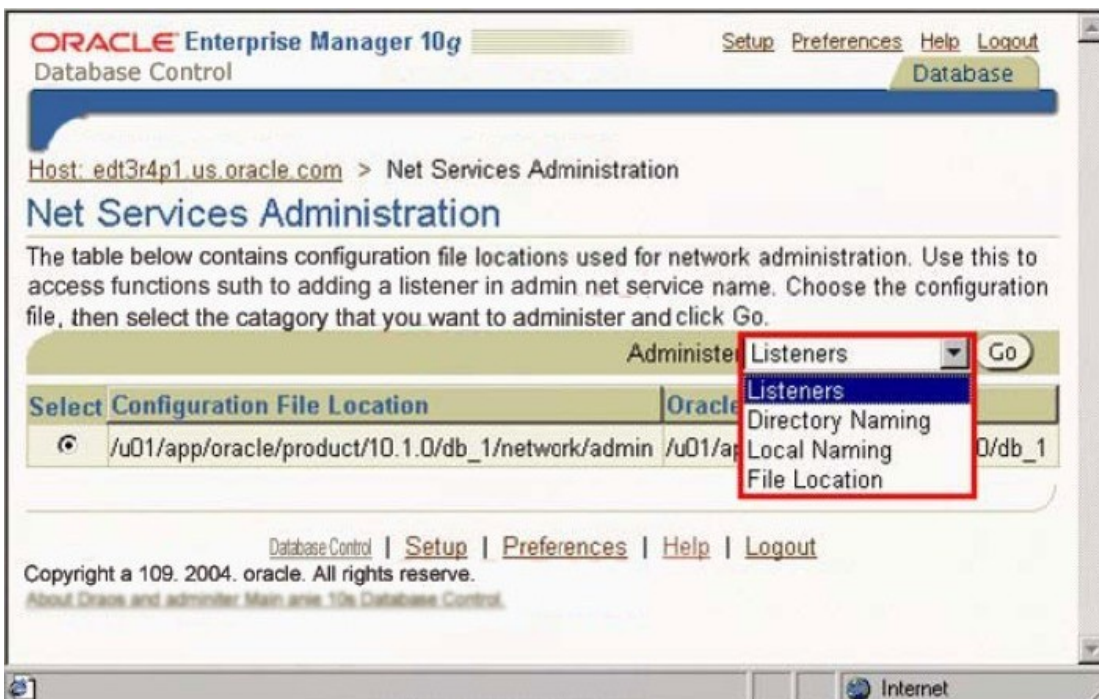
Version : Demo

1.Which three statements are correct regarding the Database Configuration Assistant (DBCA) templates? (Choose three.)

- A. Templates are XML files.
- B. Seed templates are stored with the .dbt extension.
- C. Templates cannot be copied from one machine to another.
- D. Creation of the database is faster when you use a nonseed template instead of a seed template.
- E. Templates are stored in the \$ORACLE_HOME/assistants/dbca/templates directory on a Linux platform.
- F. If you use a nonseed template to create the database, then all the datafiles and redo logs are created as per your specification.

Answer: A, E, F

2.Exhibit:



View the Exhibit and examine the Net Services Administration page of Enterprise Manager. Which menu option would you choose to manage the contents of the tnsnames.ora file?

- A: Listeners
- B: Directory Naming
- C: Local Naming
- D: File Location

Answer: C

3.To protect the sample schema accounts from an unauthorized user access, these accounts are _____.

- A. not granted any role initially
- B. operating system (OS) authenticated
- C. initially locked with their passwords expired
- D. created with their passwords stored in a password file

Answer: C

4.Which three usernames, by default, provide access to Oracle Enterprise Manager Database Control? (Choose three.)

- A. SYS
- B. MDSYS
- C. WKSYS
- D. DMSNMP
- E. SYSTEM
- F. SYSMAN

Answer: A, E, F

5.Which method can you use to receive a notification when the free disk space in the recovery area falls below 10%?

- A. Submit a job that queries the Automatic Workload Repository (AWR).
- B. Create an alert that sends a notification when the threshold value is reached.
- C. Invoke the Database Configuration Assistant (DBCA) to configure notifications and set threshold values.
- D. Specify the users who should receive notifications in the Preferred Credentials of the Enterprise Manager.
- E. Run the Automatic Database Diagnostic Monitor (ADDM) to analyze disk space and display a warning message.

Answer: B

6.Which default administrative user account does the Management Agent component of Oracle Enterprise Manager use to monitor and manage the database?

- A. OE
- B. SYS
- C. OUTLN
- D. DBSNMP
- E. SYSTEM
- F. SYSMAN

Answer: D

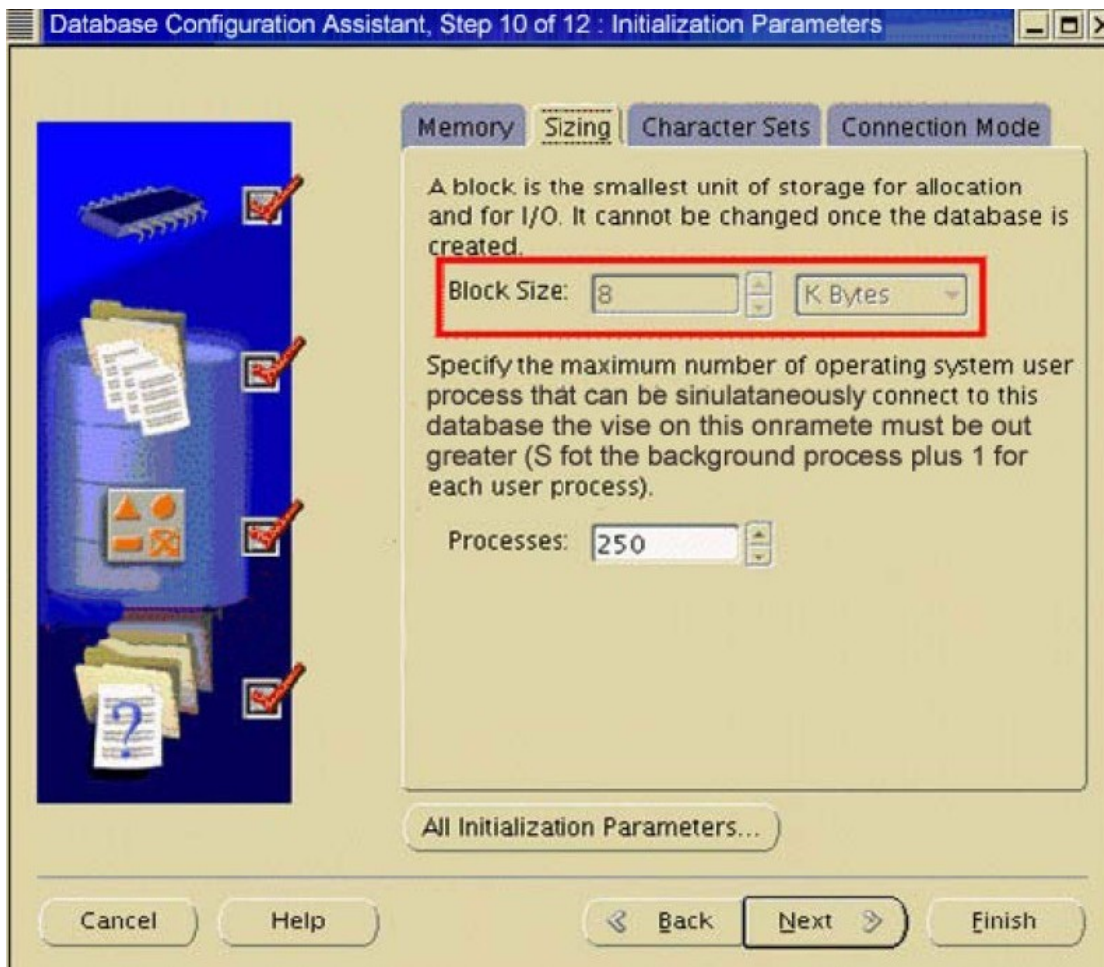
7.Which two statements are correct regarding naming methods? (Choose two.)

- A. Easy connect naming method requires no configuration.

- B. Directory naming method stores net service names in a local configuration file.
- C. Local naming method stores net service names in a supported non-Oracle service.
- D. Directory naming method stores connect identifiers in a centralized, LDAP-compliant directory server.
- E. External naming method stores connect descriptors, identified by their net service names in the sqlnet.ora file.

Answer: A, D

8.Exhibit:



View the Exhibit.

You are creating an additional database by using Database Configuration Assistant (DBCA). You realize that the Block Size field is not enabled. What could be the reason?

- A. You have chosen the File System option as the storage mechanism.
- B. You are not using the Custom Database template to create the database.
- C. You have not chosen the Use Grid Control for Database Management option.
- D. The data block size is set to the maximum block size supported by the operating system.
- E. The data block size can be increased only when DBCA is invoked from Oracle Universal Installer (OUI).

Answer: B

9.Which three statements are true about database storage structures? (Choose three.)

- A. Tablespaces comprise one or more datafiles.
- B. Segments can span datafiles within a tablespace.
- C. Datafiles can belong to more than one tablespace.
- D. Segments can span datafiles across tablespaces.
- E. Data objects are stored as segments in tablespaces.

Answer: A, B, E

10.Which three default actions are performed by Enterprise Manager when a tablespace is deleted? (Choose three.)

- A. All the objects in the tablespace are truncated.
- B. All the objects stored in the tablespace are dropped.
- C. The definitions of the objects are removed from the data dictionary.
- D. The definitions of the objects are retained in the data dictionary but made invalid.
- E. All the datafiles associated with the tablespace are deleted from the operating system.
- F. All the datafiles associated with the tablespace are not physically removed from the operating system.

Answer: B, C, E