

# **T**estpassport**Q&A**



---

**H i g h e r   Q u a l i t y**

**B e t t e r   S e r v i c e !**

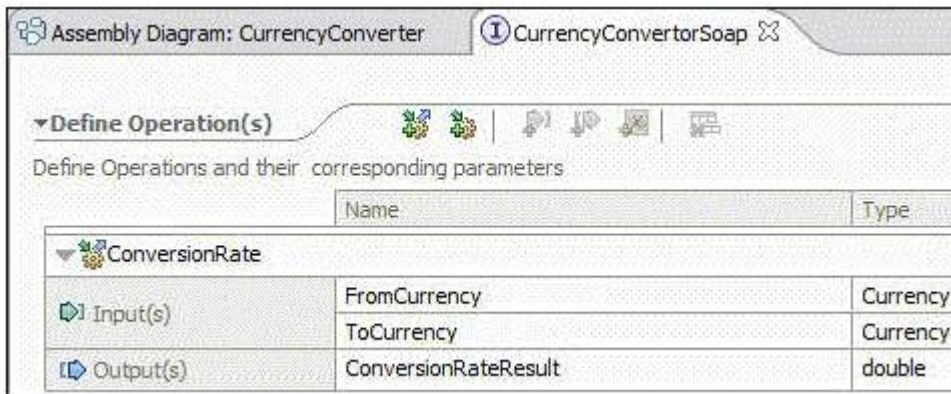
We offer free update service for one year  
[Http://www.testpassport.com](http://www.testpassport.com)

**Exam** : **000-094**

**Title** : App-Dev w/ WebSphere  
Integration Developer  
V6.0.1

**Version** : DEMO

1.How should a developer invoke the CurrencyConvertor HTTP web service asynchronously in this module, if possible at all? {\*Note: Refer to Exhibit\_3B01\_Interface AND Exhibit\_3B01\_Assembly Diagram to answer question}



Define Operation(s)		Name	Type
▼ ConversionRate			
Input(s)		FromCurrency	Currency
		ToCurrency	Currency
Output(s)		ConversionRateResult	double

- A.Update the Binding properties of the Import to specify the Invocation style is Asynchronous.
- B.Specify the Preferred interaction style is Asynchronous in the details of the Import.
- C.Ensure the Invoke activity specifies No response for the Response variable.
- D.This service cannot be called asynchronously.

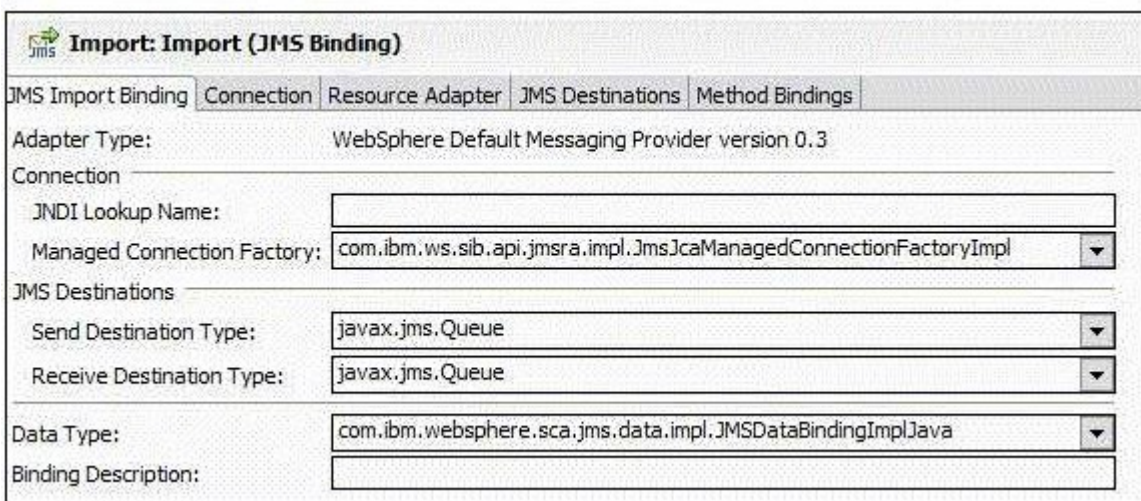
**Correct:D**

2.As part of a large integration project, the solution calls for an application to use a resource adapter. While running the Enterprise Service Discovery Wizard, the integration developer is asked whether to Deploy connector with module. A major concern centers around future upgrading of adapters used by multiple modules. How should the integration developer configure Deploy connector with module? (Note: Adapter==Connector)

- A.Deploy the adapter with the module.
- B.Deploy the adapter in a separate module.
- C.Deploy the adapter both in this module for use by this application and in a module by itself for use by other applications.
- D.It does not make a difference where the adapter is deployed since the adapter upgrade wizard will walk the developer through the process and upgrade all selected instances of the adapter.

**Correct:B**

3.Given the following configuration for and assuming the incoming data in of Object type: {Note: Refer to Exhibit\_3A01 to answer question} Which of the following statements is correct?



Import: Import (JMS Binding)	
JMS Import Binding	Connection   Resource Adapter   JMS Destinations   Method Bindings
Adapter Type:	WebSphere Default Messaging Provider version 0.3
Connection	
JNDI Lookup Name:	<input type="text"/>
Managed Connection Factory:	com.ibm.ws.sib.api.jmsra.impl.JmsJcaManagedConnectionFactoryImpl
JMS Destinations	
Send Destination Type:	javax.jms.Queue
Receive Destination Type:	javax.jms.Queue
Data Type:	com.ibm.websphere.sca.jms.data.impl.JMSDataBindingImplJava
Binding Description:	<input type="text"/>

- A.The binding will fail because the data type needs to be changed to com.ibm.websphere.sca.jms.data.impl.JMSDataBindingImplXML.
- B.There are no issues with the current configuration if the configuration is left as is.
- C.The binding will fail at runtime because the JNDI name is missing.
- D.More fields need to be displayed on the JMS Import Binding tab in order to determine if the configuration is correct.

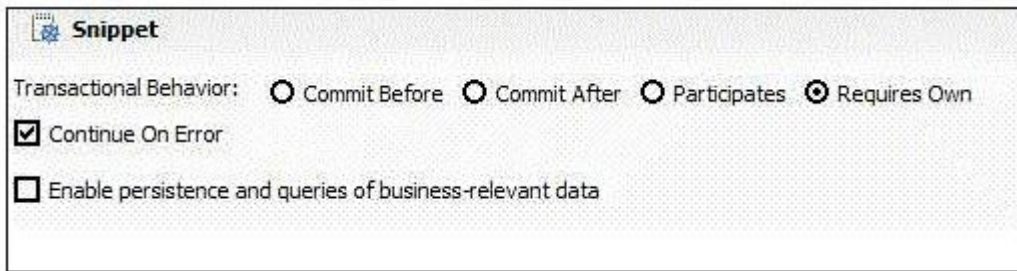
**Correct:B**

**4.A developer needs to invoke an external web service from business process. Which statement accurately describes an action that the developer must take?**

- A.Create an export in the web project containing the web service.
- B.Create an export in the module where the business process resides.
- C.Copy the wsdl file describing the external service into the module where the process resides.
- D.Copy the wsdl file describing the business process into the project containing the web service.

**Correct:C**

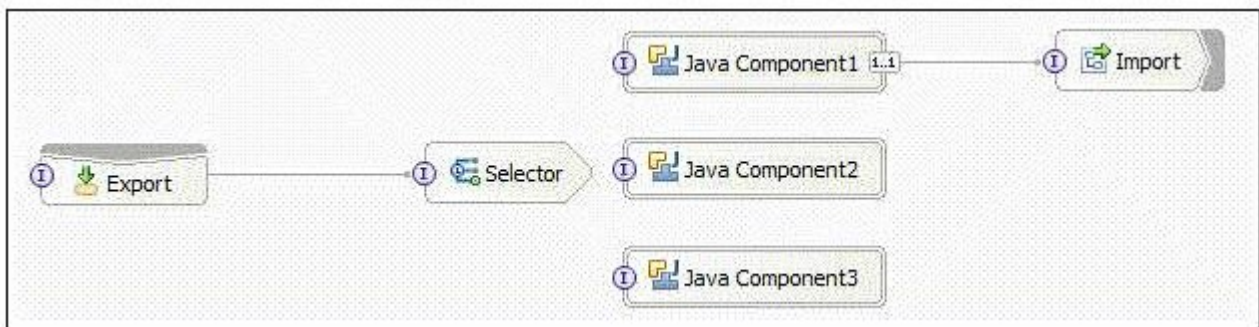
**5.Given the following configuration in a short running business process: {Note: Refer to Exhibit\_2G01 to answer question} Which of the following statements is correct?**



- A.The snippet will run in a new transaction.
- B.There will be a commit just before the snippet runs.
- C.No commit will take place before the snippet runs.
- D.A commit will take place before and after the snippet runs.

**Correct:C**

**6.Which of the following statements accurately describes the implications of the following assembly wiring? {\*Note: Refer to Exhibit\_2L01 to answer question}**



- A.The configuration is correct as it is.
- B.The wiring is incomplete. There should be no unconnected elements.
- C.The diagram is incorrect because an export cannot be connected directly to an export.
- D.The assembly is not correct as is, but it can be corrected by removing one of the Java components.

**Correct:A**

**7.A developer is building an application for a travel agency. The travel agency will receive calls from customers to obtain quotes for travel. The customers will often need many days to deliberate before they are ready to book a trip. The application should save the customer information and quote that was gathered during the initial call so that this processing does not need to be repeated. What is the most appropriate approach for the developer to handle this type of scenario in a business process?**

- A.Add an event handler to create another entry point into the process.
- B.Store the quote, wait, and add a human task to handle the reply.
- C.Add another receive into the process that will be invoked.
- D.Add another receive into the process that will be invoked and add a correlation set.

**Correct:D**

**8.A process contains an invoke activity with the continue on error checkbox selected. This long-running process fails and no fault handler exists to catch the fault. The business process engine will do which of the following?**

- A.Place the activity in a stopped state.
- B.Place the process in a stopped state.
- C.Create an administrative task for the administrator so that he/she can correct the error.
- D.Create a fault representing the failure and raise it to a higher scope.

**Correct:D**

**9.Composite state machines are used to do which of the following?**

- A.Decompose a complex state machine diagram into an easy to comprehend hierarchy of state machines.
- B.Decompose a complex state machine diagram into an easy to comprehend peer set of state machines.
- C.Define a complex state machine diagram within a single easy to understand diagram.
- D.Define a complex state machine diagram using additional building blocks not available in normal state machines.

**Correct:A**

**10.The Message Logger primitive logs a copy of the message to a database for future retrieval or audit. How should a developer specify that the body of the message be logged to the database?**

- A.Root /
- B.Root / context
- C.Root / body
- D.Custom XPath

**Correct:C**

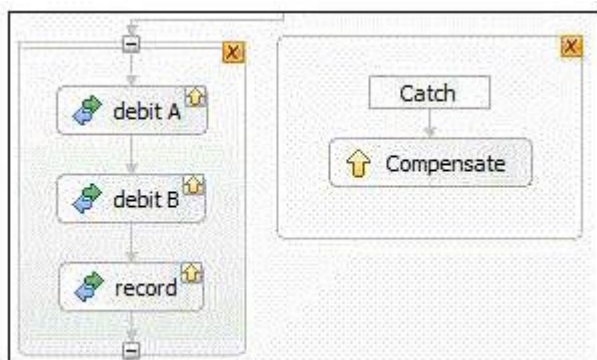
**11.An 'onEvent' event handler is added on the process. The first activity in the event handler is a Java snippet that prints data to the console. An event is sent to the process, but the output is never printed to the console. Which of the following best explains why the snippet is never invoked?**

- A.The event handler was added to the wrong invoke activity.
- B.The scope is no longer executing.
- C.An invalid timeout value was specified in the event handler.
- D.An event handler is currently being executed in the process instance.

**Correct:B**

**12.{\*Note: Refer to Exhibit\_2D03 to answer question} The figure shows a business process that contains three invoke activities within a scope. The fault handler only contains a single**

compensate activity that does not specify a target activity. Both debit A and credit B have completed successfully before record raises a fault. Which of the following will happen when the fault is caught by the fault handler?



- A. Without the target activity selected, no compensation would take place.
- B. Only the 'record' compensation handler would be triggered.
- C. The compensation handler of debit A is triggered and then the compensation handler of credit B.
- D. The compensation handler of credit B is triggered and then the compensation handler of debit A.

**Correct:D**

**13. While mapping an Order business object from a source system to an Inventory business object of a target system, a developer discovers that custom mapping logic is required to perform the required mapping. Which of the following statements describes a valid approach that the developer can take, if any?**

- A. Use a submap to invoke the custom code.
- B. Use a Custom Callout to invoke the custom code.
- C. Use a Java parameter map to invoke the custom code.
- D. This cannot be done because custom mappings are not supported.

**Correct:C**

**14. A developer wants to use the Visual Snippet editor to test a string value to see if it begins with a specific substring value. A standard visual snippet does not exist for this function. What should the developer do next?**

- A. Switch to a java snippet and implement the function using java code string functions.
- B. Select a java visual snippet and locate the appropriate java string function.
- C. Use the java shell snippet to call the java string method from the visual snippet.
- D. Click "Open Java Editor" and implement the function using java code string functions.

**Correct:B**

**15. A complex long running business process contains several business processes that will need to be versioned over time. The integration developer decides to break the complex process into a parent controlling process and child processes which use late binding. The developer wants to leverage the late binding capabilities of business processes executing in WebSphere Process Server. After breaking the complex process into a parent controlling process and smaller processes, what step should be taken next?**

- A. Add the processes to the assembly diagram and wire the processes together using the reference and interface nodes.
- B. Add the processes to the assembly diagram and wire the processes together using a selector between

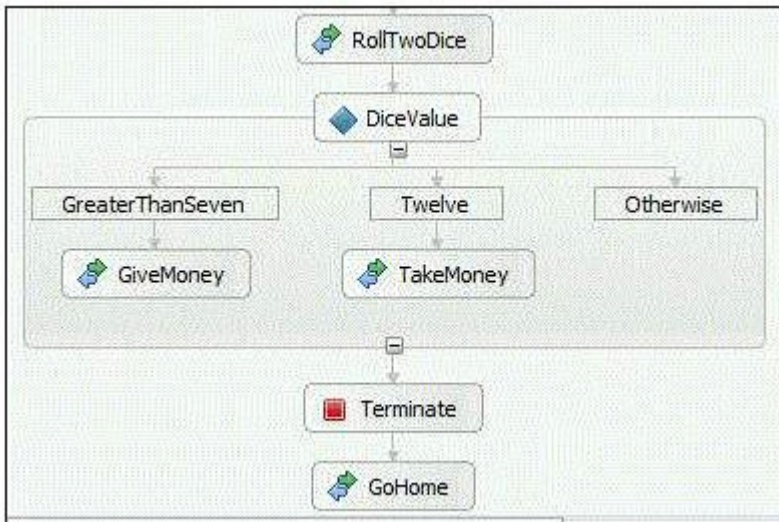
the reference and interface nodes of the process.

C.Modify the Process Template property of the parent process to include the name of the child process. Add the processes to the assembly diagram but do not wire the parent reference to the child process interface node.

D.Modify the Process Template property of the parent process to include the name of the child process. Add the processes to the assembly diagram and then the parent reference must be wired to the child process interface node.

**Correct:C**

**16.Given the following process fragment: {Note: Refer to Exhibit\_2A03 to answer question} If the RollTwoDice service returns a value of 12, then which activities will execute?**



- A. GiveMoney, TakeMoney, Terminate, GoHome
- B. GiveMoney, Terminate, GoHome
- C. GiveMoney, TakeMoney, Terminate
- D. GiveMoney, Terminate

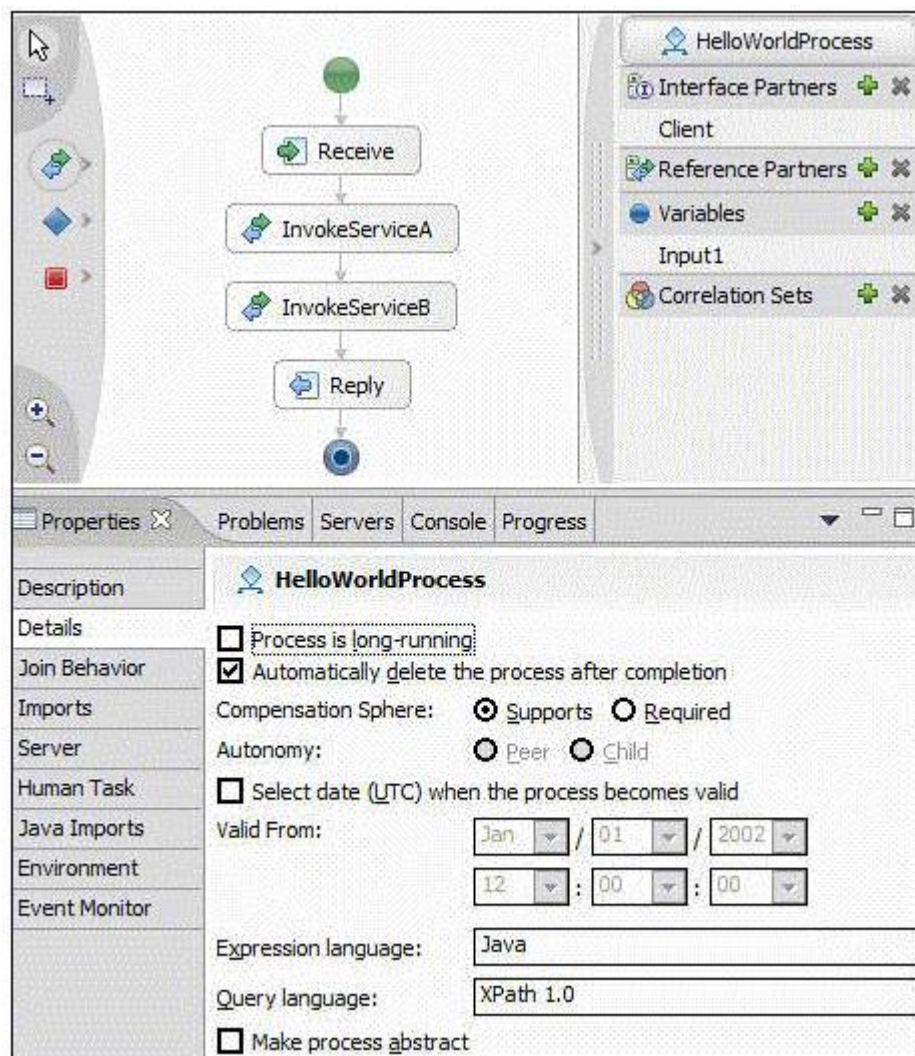
**Correct:D**

**17.Which of the following statements is NOT true about the Custom Mediation primitive?**

- A. The operation that is called must be a one-way operation.
- B. If Root is specified to be / then the WSDL operation signature must accept a complete SMO Structure.
- C. If Root is specified to be / body then the WSDL operation must accept a message body that matches that of the input terminal of the mediation primitive.
- D. The WSDL operation must produce a message body that matches the structure specified for the output terminal of the mediation primitive.

**Correct:A**

**18.{\*Note: Refer to Exhibit\_2C05 to answer question} Based upon the figure, which of the following statements can be made if this stand-alone process were to roll back?**



- A.Roll back is a feature only supported in a long-running process.
- B.Compensation would take place due to the compensation sphere setting.
- C.No compensation would take place due to the compensation sphere setting.
- D.No compensation would take place due to the lack of compensation handlers.

**Correct:C**

**19.If a developer designs a mediation flow and leaves an output terminal unwired at runtime, the output terminal stops the path in the flow:**

- A.and generates an exception.
- B.and generates an exception, and then consumes the message.
- C.without generating an exception and the message is consumed.
- D.without generating an exception and does not consume the message.

**Correct:C**

**20.Which of the following should a developer do when using a data map for mapping business data from a member of a complex type to a simple type?**

- A.Write an XPATH statement to pull the data from the source using a move parameter mapping.
- B.Use an extract parameter mapping between the source and target interfaces.
- C.Use a move parameter mapping to move the data from the source to the target interface.
- D.Create an assign parameter mapping to move the data from the source interface to the simple type.



**Correct:B**